

TurboCycler 2

Description

The TurboCycler 2 is intuitive, fast and precise. He has been specially designed to improve efficiency and accuracy of the PCR. The considerable improvement in PCR processing takes place by means of a faster rise time rate and gradient optimization.

An inexpensive and compact device with a footprint in A4 format and a 7 inch touch screen with light comprehensible user interface.

The optional Wi-Fi module allows the user to monitor the work status at any time via mobile devices.

Artikelnummer: 112.6010

Benefits

Outstanding performance

- Proven Peltier technology for trouble-free heating and cooling
- Fast heating rate up to 5.5 °C/sec
- Excellent temperature accuracy and uniformity (+/- 0,3 °C)
- 12-section gradient temperature range from 1 to 24.9°C for PCR optimization
- Quick boot-up in only 45 seconds

Intuitive Operation Experience

The sensitive 7" capacitive touchscreen enables easy operation even with laboratory gloves on.

Convenient Tools

The built-in tools allow easy T_m calculation, copy number conversion and master mix preparation.

User-Friendly Interface

The simple conversational graphic user interface, which has intuitive spinning wheels, makes adjustment of experiment temperature, time and cycle easy.

Heated Lid

Automatic pressure-controlled and heatable lid to prevent condensation.

Multi Probe Temperature Detection System

For calibration and QC process.

USB-Port

For protocol and run log output via USB flash drive.

Wi-Fi Modul (optional)

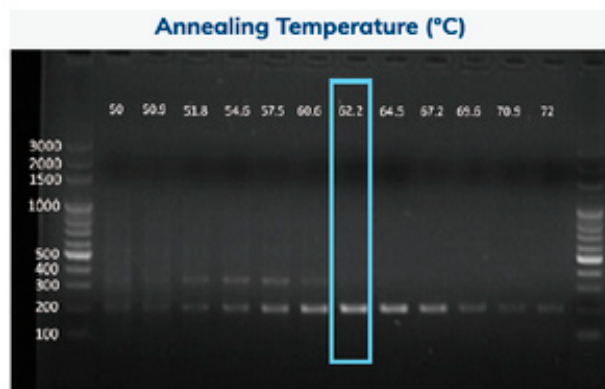
Allows monitoring PCR run status anytime via mobile devices using the free TurboApp.



With optional Wi-Fi modul

Optimized gradient function

Enables users to screen optimal experimental conditions in a single PCR run.



The specific 200bp PCR product has the best PCR yield at an annealing temperature of 62.2 °C.



TurboCycler 2

Specifications

Sample Block	
Gradient Block	96-Well, compatible with regular profile or low profile 0.2 ml PCR tube, strip, none-skirted, semi-skirted and full-skirted 96-well plate
Block Temperature	
Block Temperature Range	4.0 – 99.9 °C
Max. Heating Rate	5.5 °C/sec
Max. Cooling	3.3 °C/sec
Temperature Accuracy	± 0.3 °C
Temperature Uniformity Across Block	± 0.3 °C
Adjustable Ramping and Cooling Rate	Yes, low / high
Gradient Temperature	
Gradient Direction	Horizontal across the block
Gradient Temperature Range	30 – 99 °C
Gradient Temperature Difference	Max. span 24.9 °C
Software	
Portability of Protocols	Save and transfer to computer or TurboCycler 2 via USB flash drive
Stored Program No.	> 500 sets
Registered User Folder No.	100 sets
User Folder Password Protection	Yes
Run Status Report	Yes, HTML output and transfer via USB flash drive
Real-time Temp. Profile Export	Yes, CSV output and transfer via USB flash drive
Tools	Tm calculator, Copy number convertor, Master mix preparation wizard
General	
Display	7" color LCD with capacitive touch panel
Data port	1 USB Type-A front port for USB flash drive
Heated Lid	Yes, fixed 105°C, 120°C and off
Auto Restart after Power Outage	Yes
Remote Motoring via Wi-Fi	Optional
Footprint Dimensions (H x W x D)	225 x 245 x 415 mm
Weight	9.5 kg
Power Supply	VAC 240 V, 50/60 Hz, 750 W
Certification	CE IVD, RoHS