

## Cold Box - Models B 35

### Description

The B35-85 deep-freeze box is a specialist for small cooling tasks in laboratory and industry. It operates extremely quietly and was designed for cooling and freezing up to -85°C.

Optionally, the models are available with data logger.

### Specifications

- Outstanding use of interior space together with compact exterior dimensions thanks to vacuum insulation panels (VIP)
- A significant improvement in energy efficiency compared to standard PU foam insulation
- Extremely quiet cooling unit
- Microprocessor-controlled adjustment using a membrane keyboard
  - Clearly legible LED display
  - Protection against inadvertent activation
- Maximum reliability thanks to an alarm system that is separate from the mains, with battery capacity for approx. 72 hours
  - Display of the maximum temperature reached in the interior area during the fault
  - Visual and acoustic alarm signal
- Interfaces
  - Potential-free contact with the connection to an external alarm system
  - RS485 interface
  - 100 mV/K output for connecting a temperature recording system
- High-grade stainless steel interior
- Interior without fixtures enables easy cleaning and disinfection
- Bushing (diameter 10 mm), e.g. for temperature monitoring with external sensors
- Lockable door latch with lever action
- Insulation door with optimum sealing efficiency
  - Profiled construction, as a result no interior cover required
  - Magnetic seal with an additional sealing surface
  - Door frame heating
- Stackable unit, max. 2 units



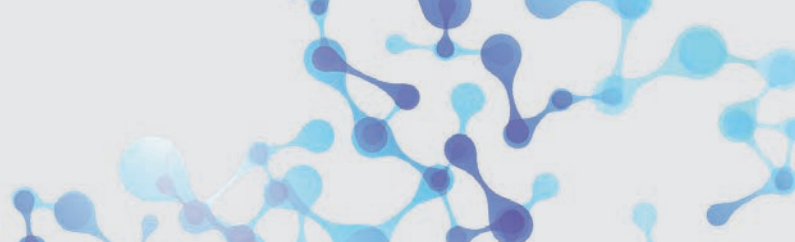
Cold Box B 35-85 (without data logger)  
Order No.: 104.5104



Cold Box B 35-85 (without data logger)  
Order No.: 104.5104



Cold Box B 35-85/LOGG with data logger (option)



# Cold Box - Models B 35



## Technical Data

Model	B 35-50	B 35-85
Order No.	104.5102	104.5104
Temperature range	-50°C to -10°C	-85°C to -50°C
Control accuracy	±1 K	
Capacity	35 litres	35 litres
Interior dimensions (W x D x H)	425 x 300 x 280 mm	425 x 300 x 280 mm
External dimensions (W x D x H)	580 x 765 x 540 mm	580 x 765 x 540 mm
Weight	65 kg	81 kg
Ambient temperature (min/max)	+10°C to +32°C	
Electrical connection	230 V / 50 Hz	

## Optional Features

### Models with Data Logger

Equipped with colour touch-screen control for extensive control functions of the freezer box, such as error analysis, temperature logger and remote maintenance via the Internet.

Models B 34-50/LOGG and B 35-85/LOGG

## Optional Accessory

### Stainless Steel Shelf B 35-RS

Order No.: 104.5112

- For 30 standard cryoboxes (135 x 135 x 52 mm)
- Five drawers, each for six standard cryoboxes
- Extra gaps for optimum, uniform and rapid cooling of all the refrigerated items
- Various cryoboxes available

