

Chest Freezer - TT Series

Description

The TT freezer series is the classic solution for cooling and freezing for laboratory and industry.

The space-saving and low-noise construction makes it possible to use the freezers directly at the workplace.

Specifications

- Optimum use of interior space: use of vacuum insulation panels (VIP) enables a large interior space with compact external dimensions.
- Extremely quiet cooling unit
- Microprocessor-controlled adjustment using a membrane keyboard
 - Clearly legible LED display
 - Protection against inadvertent activation
- Maximum reliability thanks to an alarm system that is separate from the mains, with battery capacity for approx. 72 hours
 - Display of the maximum temperature reached in the interior area during the fault
 - Visual and acoustic alarm signal
- Interfaces
 - Potential-free contact with the connection to an external alarm system
 - RS485 interface
 - 100 mV/K output for connecting a temperature recording system
- High-grade stainless steel interior
- Interior without fixtures enables easy cleaning and disinfection
- Bushing (diameter 19mm), e.g. for temperature monitoring with external sensors
- Lockable cover latch with lever action
- Insulation cover with optimum sealing efficiency
 - Profiled construction, as a result no interior cover required
 - Magnetic seal with an additional sealing surface
 - Door frame heating



Tiefkühltruhe TT 50-90

Optional Features

Integrated Data Logger

Touchscreen control with color display and integrated data logger for full traceability.

Mobile Version

Four fixed rollers, two with brakes

Circulating Air Fan

Only for model TT 50-90:

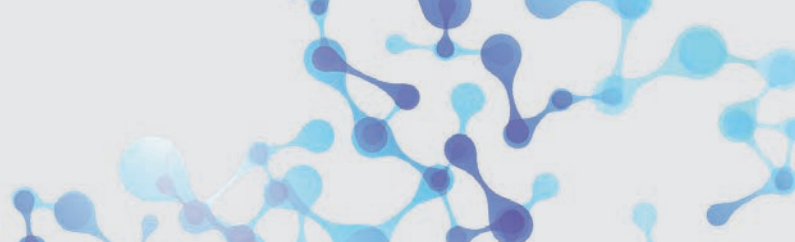
For even temperature distribution throughout the interior

Optional Accessories

Stainless Steel Shelf RC


- For storage of six standard cryoboxes (135 x 135 x 52 mm) per shelf
- 12 shelves possible per chest
- Extra gaps for optimum, uniform and rapid cooling of all the refrigerated items





Chest Freezer - TT Series

Technical Data

Model	TT 50-90	TT 85-90
Figure		
Order No.	104.5172	104.5174
Temperature range	-50°C bis -10°C	-85°C bis -50°C
Control accuracy	±1 K	
Capacity	90 litres	90 litres
Interior dimensions (W x D x H)	590 x 430 x 370 mm	590 x 430 x 370 mm
Exterior dimensions (W x D x H)	760 x 710 x 880 mm	760 x 710 x 880 mm
Weight	92 kg	110 kg
Ambient temperature (min/max)	+10°C up to +32°C	
Electrical connection	230 V / 50 Hz	