

Intelli-Mixer™ RM-2L

Description

The Intelli-Mixer is designed for mixing various liquid laboratory samples in a wide range of test tubes with volumes from 0.5 ml to 50 ml.

Intelli-Mixer combines three devices in one: Rotator, Vortex and Blotter.

Powered by V-Spin - the world's most advanced, patented mixing and liquid handling technology - the Intelli-Mixer™ RM-2 is the cutting edge of science.

V-Spin uses the energy of a unique stepper motor to enable a wide range of mixing, vibration and rotation cycles.

This versatile unit is refrigerator safe and features 34 automatic, intelligent mixing programs.

15 Mix Modes

The state-of-the-art Intelli-Mixer™ is equipped to perform each and every type of test tube mixing with brilliant efficiency. This versatile unit comes standard with a mixed test tube rack, supporting 0.5 to 50 ml test tubes. Additionally, 3 optional rack-lengths are available, along with an assortment of accessories to satisfy your specific lab needs. Outfitted with 2 vortex frequencies, this powerful mixer is capable of simultaneously vortex-mixing up to 42 Eppendorf tubes.

12 Rocking Modes

The Intelli-Mixer's™ powerful motor drive combined with the thoughtfully designed rocking program ensures a consistently reliable, high performance in all 12 applications. Its speed controller automatically alternates between RPM and Shakes Per Minute to guarantee precise control and reproduction. The innovative design of the rocking platform, with an anti-slip surface, provides ample room for a variety of samples while insuring no turnover even in the event of a power outage.



Intelli-Mixer RM-2L

4 Blotting Modes

The Intelli-Mixer's™ ultrasonic, vibration blotting modes are specifically designed for western blot protocol. Rigorously tested, this blotting method has consistently excelled in the following areas:

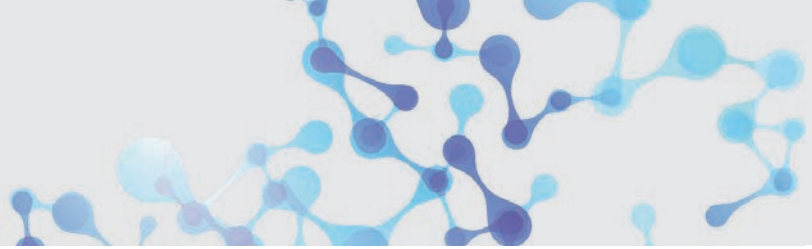
- Sensitivity – shown to be up to 20 times more sensitive;
- Speed – 3 to 5 times faster;
- Specificity – up to 4 times less likely to have cross-reactivity;
- Savings – up to 12 times less likely to require the use of reagents

Intelli-Mixer™ RM-2L



Technical Data

Rotation speed	1 - 99 rpm (Increment 1 rpm)
Overall number of programmes	28 Standard (preset) 3 Custom
Environmental Temperature	+2 up to +50 °C
Rel. humidity (at 20°C)	up to 80%
Dimensions (W x D x H)	420 x 125 x 168 mm
Weight	1.9 kg
Nominal operating voltage	Input AC 100-220 V, 50/60 Hz, Output DC 12V, 1.5 A
Power consumption	12 W
Order No. Intelli-Mixer RM-2L incl. Mix-Rack	105.2022



Intelli-Mixer™ RM-2L

Optional Platforms

Mix-Rack RM-2L (Included in delivery)



Order No.: 105.2046

Kapazität:
16 x 11 mm tubes
12 x 13 mm tubes
4 x 16 mm tubes
2 x 30 mm tubes

8 mm Tube Rack RM-2L



Order No.: 105.2045

Kapazität:
44 x 8 mm Ø tubes
0.5 ml tubes

11 mm Tube Rack RM-2L



Order No.: 105.2044

Kapazität:
44 x 11 mm Ø tubes
2 ml tubes

13 mm Tube Rack RM-2L



Order No.: 105.2043

Kapazität:
40 x 13 mm Ø tubes
12 ml tubes

16 mm Tube Rack RM-2L



Order No.: 105.2042

Kapazität:
22 x 16 mm Ø tubes
15 ml tubes

30 mm Tube Rack RM-2L



Order No.: 105.2041

Kapazität:
10 x 30 mm Ø tubes
50 ml tubes

Blotting Rack RM-2L



Order No.: 105.2040

Kapazität:
12 x 50 ml tubes

Rocking Platform RM-2L



Order No.: 105.2056

Dimensions:
250 x 170 mm
Anti-slip mat inclusive.
Only usable with certain
settings.