

Rotator Multi RS-60

Description

The RS-60's multi-rotation options allow you to adapt the mixing process to your individual tasks and significantly increases the efficiency of sample preparation for the materials under examination.

The programmable Rotator Multi RS-60 is able to perform several types of movements in one module:

- Vertical rotation (1)
- Reciprocal rotation (2)
- Vibration (3)

These three motion types can be performed separately, pairwise and in cycles, periodically repeating the sequence of three motion types.

During the stop mode the platform does not perform extra turnover and stops in a horizontal plane. Additionally there is a possibility of setting the plane with respect to which platform oscillates vertically or horizontally.

Applications

- Hybridization reactions
- Cell growing
- Soft extraction and homogenisation of biological components in solutions
- Reactions of binding and washing of magnetic particles

Application in Incubator/Cold Room

Multi Bio RS-60 is suitable for operation in cold rooms, incubators (except CO₂ incubators) and closed laboratory rooms.

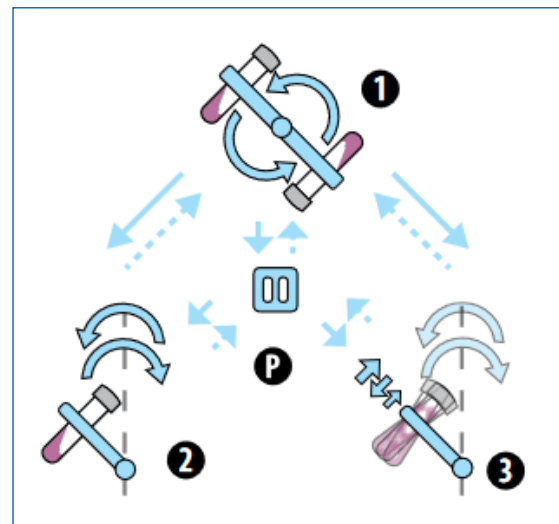
Requirements:

- Ambient temperature: +4°C up to +40°C
- A non-condensing atmosphere
- Max. relative humidity: 80%

Low voltage external power supply (24 V) provides electrical safety in humid environment.

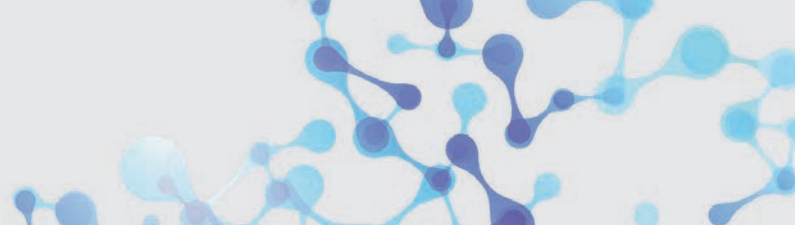


Multi RS-60 rotator with platform PRS-48



Programmable rotator provides three rotation types and pause:

- ① vertical rotation
- ② reciprocal rotation (rocking motion)
- ③ vibro
- P pause

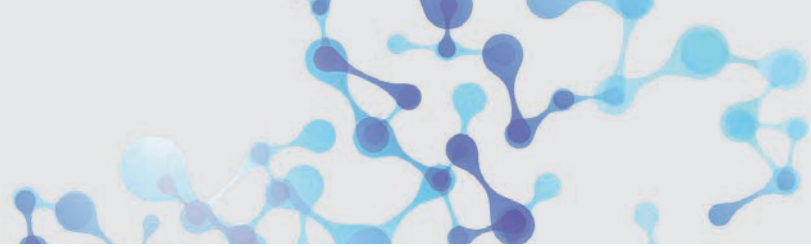


Rotator Multi RS-60



Technical Data

Model	MultiBio RS-60
Order No.	105.2390
① Vertical rotation	
Speed setting range	1 – 100 U/min (increment 1 rpm)
Rotation movement	360°
Time setting	0 – 250 s
② Reciprokal rotation (rocking motion)	
Speed setting range	1 – 100 rpm (increment: 1 rpm)
Tilt angle range	1 – 90° (increment 1°)
Time setting	0 – 250 s
③ Vibration	
Tilt angle range	0 – 5° (increment 1°)
Pause/time setting range	0 – 5 s
General Technical Data	
Digital time setting	1 min – 24 h/non-stop (increment 1 min)
Timer sound signal	Yes
Max. loading	0.8 kg
Overall dimensions (W x D x H)	430 x 230 x 230 mm
Weight	3.8 kg
Input current/power consumption	24 V, 750 mA/18 W
External power supply	Input AC 100 – 240 V 50/60 Hz; Output DC 24 V



Rotator Multi RS-60



Optional Platforms



PRS-14
Max. capacity:
14 tubes with
Ø 20 - 30 mm
Volume:
50 ml tubes



PRS-48
Max. capacity:
48 tubes with
Ø 10 - 16 mm
Volume:
1.5 - 15 ml



PRS-8/22
Max. capacity:
14 tubes with
Ø 20 - 30 mm and
Ø 10 - 16 mm
Volume:
1.5 - 15 ml and 50 ml