

Orbital Shaker PSU-10i

Description

The PSU-10i shaker has a controlled orbital motion and is ideally suited for both small specialised biotechnology laboratories and large multi-disciplinary laboratories.

Five interchangeable platforms for Erlenmeyer flasks, Petri dishes or tubes make the PSU-10i an all-rounder for a wide range of processes and applications.

The sophisticated shaker features a direct drive system, a brushless motor with a guaranteed service life of up to 35,000 hours and an automatic load balancing system. These innovations enable continuous mixing for up to seven days, ensure reliable, trouble-free operation and significantly extend the performance range of the units in both high and low ranges.

The unit is designed for operation in cold rooms, incubators (excluding CO₂ incubators) and closed laboratory rooms at ambient temperature from +4°C to +40°C in a non-condensing atmosphere and maximum relative humidity 80% for temperatures up to 31°C decreasing linearly to 50% relative humidity at 40°C.



PSU-10i with platform UP-12



PSU-10i with platform P-6/250



PSU-10i mit Plattform UP-12



PSU-10i with platform Bio PP-4

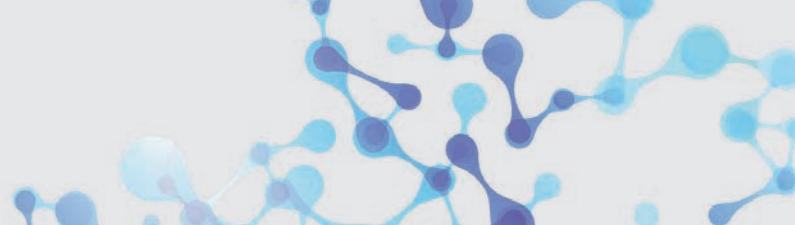
For further accessories, see page 3.

Orbital Shaker PSU-10i



Technical Data

Speed control range	50 - 450* rpm (increment 10 rpm) *max. speed depends on the load and vessels' shape
Digital time setting	1 min – 96 h / non-stop
Timer Tonsignal	yes
Digital speed control	yes
Maximum continuous operation time	168 h
Orbit Ø	10 mm
Max. load	3 kg
Ambient temperature	+4°C to +40°C
Overall dimensions (W x D x H)	255 x 255 x 100 mm
Weight	3.4 kg
Input current	12 V, 800 mA
Power consumption	9,6 W
External power supply	Input AC 100–240 V, 50/60 Hz, Output DC 12 V
Order No. PSU-10i Basic device without platform	105.1205



Orbital Shaker PSU-10i – Accessories

Optional Platforms



Universal Platform UP-12

Universal platform with 3 adjustable bars for different types of flasks, bottles, and beakers with silicone mat.
Working area:
270 x 185 x 40 mm



Holding bar HB-200

Additional holding bar for universal platform UP-12.



Platform P-12/100

Platform with clamps for 12 flasks.
Flask volume:
100 - 150 ml
Number of clamps: 12
Working area:
250 x 190 mm



Flat Platform Bio PP-4

Flat platform with non-slip silicone mat.
For Petri dishes, culture flasks, agglutination cards.
Platform size:
255 x 255 mm
Working area:
230 x 230 mm



Platform P-6/250

Platform with 6 clamps for flasks.
Flask volume:
250 - 300 ml
Number of clamps: 6
Working area:
250 x 190 mm



Flat Platform PP-4

Metallic flat platform made of metal with small frame and non-slip silicone mat.
For petri dishes, culture flasks, agglutination cards.
Platform size:
220 x 220 mm
Working area:
215 x 215 mm



Platform P-16/88

Platform with spring holders for up to 88 tubes up to 30 mm diameter
Tube volume:
up to 30 mm Ø,
e.g. 10 ml, 15 ml, 50 ml
Working area:
275 x 205 x 75 mm



Adhesive Mat SPM

Double-sided adhesive PET mat as an alternative to conventional bottle clips.
Shaking speed:
0 – 400 rpm
Size: 210 x 210 x 3 mm

