

Heating /Cooling Thermostat CH-3

Description

CH-3 is specially designed to thermostabilise materials at temperatures from -3°C to +150°C according to methods of analysis.

To save valuable space in the laboratory, the combi unit consists of two independent cooling and heating blocks.

The left part of the front keyboard is responsible for setting parameters for cooling plug-in blocks and the right part for heating plug-in blocks. Both parts can be regulated independently of each other.

Thus, up to 16 programmes can be carried out, including temperature and time in each programme. Peltier technology is used for cooling below room temperature. PCB is used for heating up to +150°C.

Separating the cooling and heating sections increases the life of the instrument and speeds up the temperature change after a programme change.

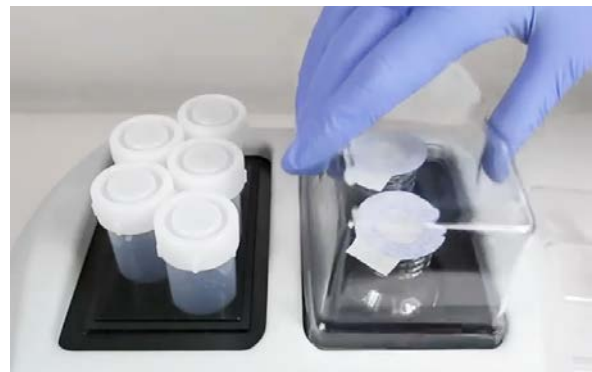
The blocks for the two block places are variable and must be ordered separately (see page 3).

Block Options

You will find the exact description on page 3. Please order blocks separately.

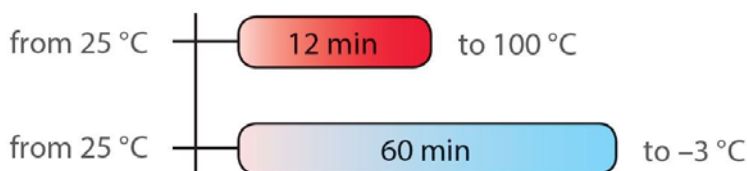


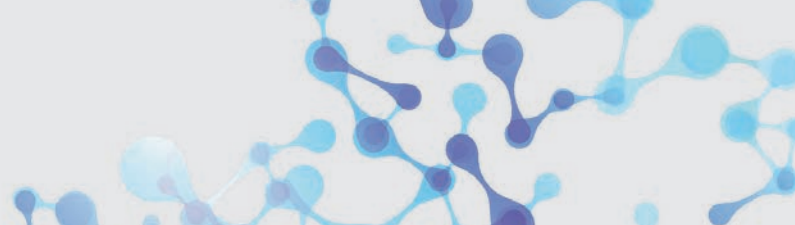
CH 3-150 heating / cooling thermostat



CH-3 thermostat with block B5-29 (left) and block B2-50 (right)

Heat up and cool down times for CH-3



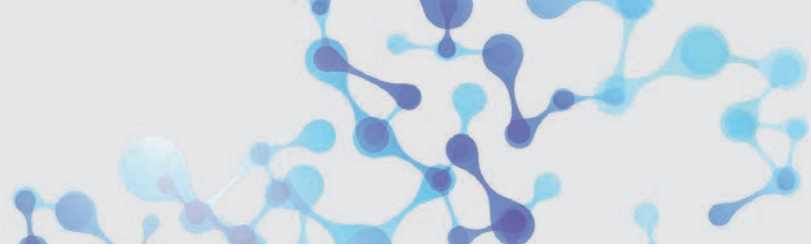


Heating /Cooling Thermostat CH-3



Technical Data

Heating Block	
Temperature setting range	+25°C to +150°C
Temperature control range	5°C above ambient to +150°C
Setting resolution	1°C
Temperature stability	±0.1°C
Temperature calibration coefficient range	0.936- 1.063 (± 0.063)
Cooling Block	
Temperature setting range	-3°C to +20°C
Temperature control range	23°C below ambient to 5°C below ambient
Setting resolution	0.1°C
Temperature stability	±0.1°C
General Technical Data	
Order No. Basic unit CH-3 (without blocks)	104.1815
Digital time setting	1 min - 99 hrs / 59 min (increment 1 min)
Timer sound signal	Yes
Display	LCD
User adjustable programs (temperature and time)	16 (heating) + 16 (cooling)
Overall dimensions (W x D x H)	295 x 285 x 220 mm
Weight	5.6 kg
Input current/power consumption	1.8 A / 430 W
Power supply	230 V, 50/60 Hz



Heating /Cooling Thermostat CH-3



Optional Blocks



B6-25
Depth: 40 mm
Diameter: 25 mm
Capacity: 6



B23-1.5
Depth: 35 mm
Capacity: 23 x 1.5 ml



B5-29
Depth: 40 mm
Diameter: 29 mm
Capacity: 5



B10-16
Depth: 56 mm
Diameter: 16 mm
Capacity: 10



B2-50
Depth: 58 mm
Diameter: 48 mm
Capacity: 2



B18-12
For Tubes with round bottom
Depth: 58 mm
Diameter: 12 mm
max. Height: 75 mm
Capacity: 18



B10-13
For Tubes with flat bottom
Depth: 30 mm
Diameter: 13 mm
Capacity: 10

LG_062_E 08/2023 Subject to technical changes and errors.