

Heating / Cooling Dry Block – CH-100

Description

CH-100 is the result of combining two popular instruments:

1. Heating Dry Block and
2. Cooling Dry Block thermostat

The combined construction of aluminium block and Peltier element module cooled with the forced ventilation radiator provides fast changing of the cooling and heating modes.

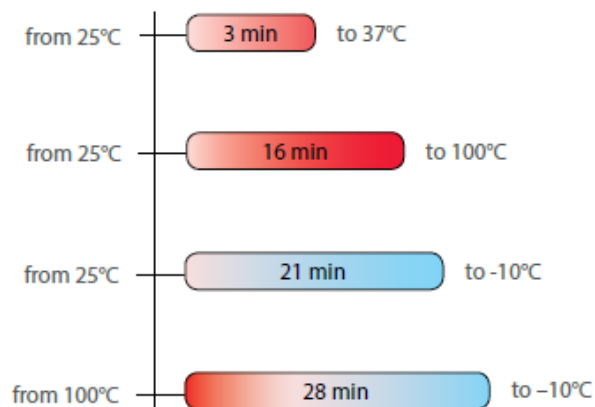
CH-100 is a very effective instrument of sample preparation during enzyme reactions, hybridization reactions, DNA analysis.

Time and temperature are controlled by microprocessor. Set and actual temperature and time are shown simultaneously on the display.



CH-100 Heating / Cooling Dry Block

Heat up and cool down times for CH-100

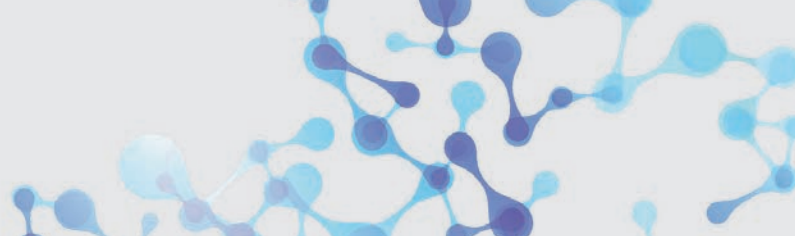


CH-100 Heating / Cooling Dry Block, Display

Block Variants

The blocks are **permanently integrated** in the unit and cannot be exchanged. This means that you decide on a specific block variant with your purchase.

Block	Capacity	Order No.
CH-1	20 x 0.5 ml + 12 x 1.5 ml Micro tubes	104.1809
CH-2	20 x 1.5 ml Micro tubes	104.1810
CH-3	20 x 2 ml Micro tubes	104.1811



Heating / Cooling Dry Block CH-100

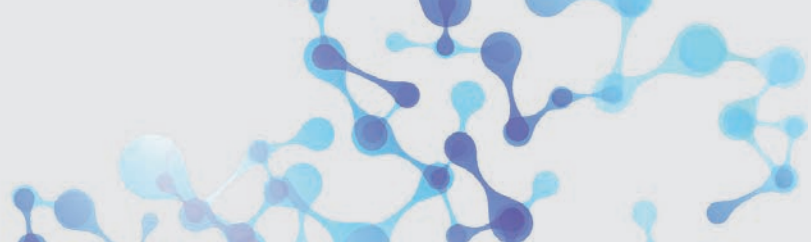


Technical Data

Temperature setting range	-10°C to +100°C
Temperature control range	30°C below ambient to +100°C
Temperature setting resolution	0.1°C
Temperature stability	±0.1°C
Temperature uniformity at +37°C	±0.25°C
Temperature calibration coefficient range	0.936 – 1.063 (± 0.063)
Digital time setting	1 min - 96 hrs / non-stop (increment 1 min)
Timer sound signal	Yes
Display	LCD, 16 x 2
Overall dimensions (W x D x H)	240 x 260 x 165 mm
Weight	3.2 kg
Input current / power consumption	12 V, 4.4 A / 55 W
External power supply	Input AC 100 – 240 V 50/60 Hz, Output DC 12 V

Calibration

The unit is factory pre-calibrated (calibration coefficient is 1.000) for operation with temperatures measured by a sensor in the heating block.



Heating / Cooling Dry Block CH-100



Block Variants

The blocks of the CH-100 are permanently integrated in the unit and cannot be exchanged. This means that you decide on a certain block variant with your purchase.



Block CH-1

12 x 1.5 ml tubes
20 x 0.5 ml tubes

Part No.: 104.1809



Block CH-2

20 x 1.5 ml tubes

Part No.: 104.1810



Block CH-3

20 x 2 ml tubes

Part No.: 104.1811