

Microtubes SCT - with Screw Caps

Description

Screw-capped microtubes are used in a variety of laboratory applications. These include collection, processing, centrifugation, long-term storage and packaging/shipping of valuable biological materials.

The colour-coded caps provide a syringe port which is easily pierced for access to the contents. The threaded 'O' ring design ensures a uniform closure allowing centrifugation up to 20,000 RCF. Ribs are designed to facilitate single-handed opening and closing, even with gloves on.

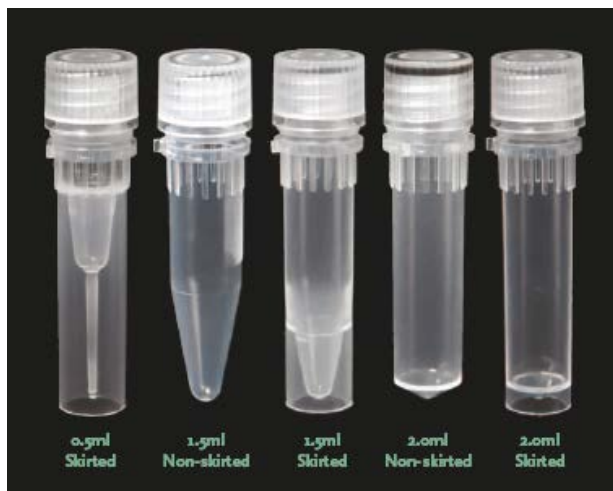
Screw cap microtubes are supplied nonsterile, un-assembled with both tubes and caps packed separately

Option Pre-sterilized

These microtubes are also available pre-sterilized. 100 tubes per unit, 5 units per pack, 2 units per box, caps on.

Specifications

- Ideal for long-term, secure storage and transportation of biological reagents
- Available with 5 colors of caps plus clear
- Suitable for high speed centrifugation up to 20,000 x g
- Can be used at extreme temperatures ranging from -195°C (LN₂ vapor phase) to +121°C.

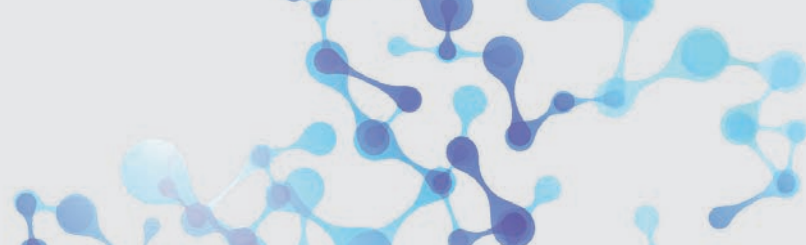


Different tube variants with screw caps



Light blocking Amber (optional)





Microtubes SCT - with Screw Caps

0.5 ml - Self Standing

Description	Volume	Order No.
Self Standing Clear Tube, Clear Screw Cap, Non Sterile	0.5 ml	SCT-050SS-C
Self Standing Clear Tube, Green Screw Cap, Non Sterile	0.5 ml	SCT-050SS-G
Self Standing Clear Tube, White Screw Cap, Non Sterile	0.5 ml	SCT-050SS-W
Self Standing Clear Tube, Blue Screw Cap, Non Sterile	0.5 ml	SCT-050SS-B
Self Standing Clear Tube, Yellow Screw Cap, Non Sterile	0.5 ml	SCT-050SS-Y
Self Standing Clear Tube, Red Screw Cap, Non Sterile	0.5 ml	SCT-050SS-R



1.5 ml - Conical Bottom

Description	Volume	Order No.
Conical Bottom Clear Tube, Clear Screw Cap, Non Sterile	1.5 ml	SCT-150-C
Conical Bottom Clear Tube, Green Screw Cap, Non Sterile	1.5 ml	SCT-150-G
Conical Bottom Clear Tube, White Screw Cap, Non Sterile	1.5 ml	SCT-150-W
Conical Bottom Clear Tube, Blue Screw Cap, Non Sterile	1.5 ml	SCT-150-B
Conical Bottom Clear Tube, Yellow Screw Cap, Non Sterile	1.5 ml	SCT-150-Y
Conical Bottom Clear Tube, Red Screw Cap, Non Sterile	1.5 ml	SCT-150-R



1.5 ml - Conical Bottom, Self Standing

Self Standing (Conical), Clear Tube, Clear Screw Cap, Non Sterile	1.5 ml	SCT-150SS-C
Self Standing (Conical), Clear Tube, Green Screw Cap, Non Sterile	1.5 ml	SCT-150SS-G
Self Standing (Conical), Clear Tube, White Screw Cap, Non Sterile	1.5 ml	SCT-150SS-W
Self Standing (Conical), Clear Tube, Blue Screw Cap, Non Sterile	1.5 ml	SCT-150SS-B
Self Standing (Conical), Clear Tube, Yellow Screw Cap, Non Sterile	1.5 ml	SCT-150SS-Y
Self Standing (Conical), Clear Tube, Red Screw Cap, Non Sterile	1.5 ml	SCT-150SS-R



2.0 ml - Conical Bottom

Description	Volume	Order No.
Conical Bottom Clear Tube, Clear Screw Cap, Non Sterile	2.0 ml	SCT-200-C
Conical Bottom Clear Tube, Green Screw Cap, Non Sterile	2.0 ml	SCT-200-G
Conical Bottom Clear Tube, White Screw Cap, Non Sterile	2.0 ml	SCT-200-W
Conical Bottom Clear Tube, Blue Screw Cap, Non Sterile	2.0 ml	SCT-200-B
Conical Bottom Clear Tube, Yellow Screw Cap, Non Sterile	2.0 ml	SCT-200-Y
Conical Bottom Clear Tube, Red Screw Cap, Non Sterile	2.0 ml	SCT-200-R



2.0 ml - Conical Bottom, Self Standing

Self Standing (Conical), Clear Tube, Clear Screw Cap, Non Sterile	2.0 ml	SCT-200SS-C
Self Standing (Conical), Clear Tube, Green Screw Cap, Non Sterile	2.0 ml	SCT-200SS-G
Self Standing (Conical), Clear Tube, White Screw Cap, Non Sterile	2.0 ml	SCT-200SS-W
Self Standing (Conical), Clear Tube, Blue Screw Cap, Non Sterile	2.0 ml	SCT-200SS-B
Self Standing (Conical), Clear Tube, Yellow Screw Cap, Non Sterile	2.0 ml	SCT-200SS-Y
Self Standing (Conical), Clear Tube, Red Screw Cap, Non Sterile	2.0 ml	SCT-200SS-R

