



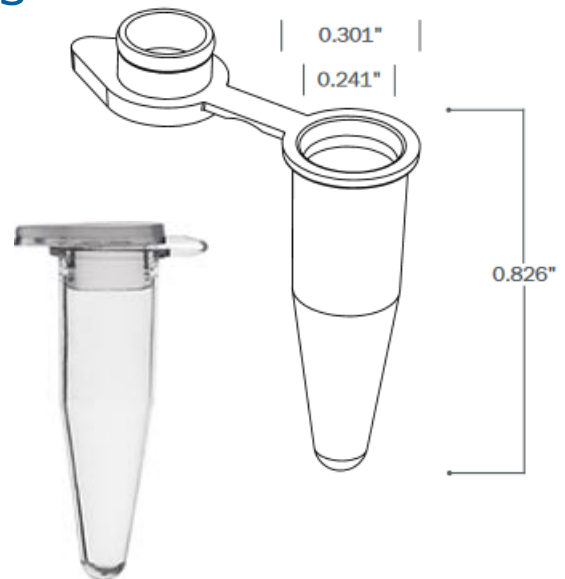
# PCR Single Tubes, 3423 Series Flat Cap

## Description

Uniform thin-walled design for optimum heat transfer.  
Available in pre-sterile, sorted by colour, sorted by pre-sterile or transparent non-sterile.  
With flat lid for easy labelling.  
Each batch is subjected to strict testing and single batch testing.

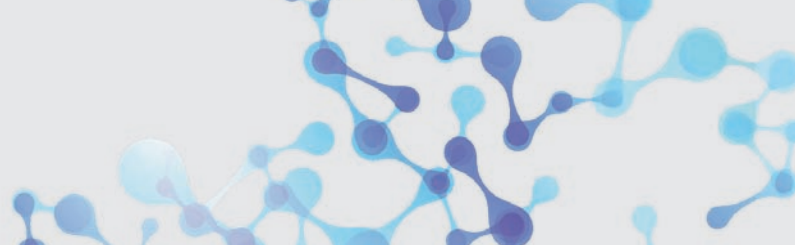
All tubes are certified free of:

- DNA
- DNase & RNase
- Endotoxine (Pyrogene)



## Technical Data

Description	0.2 ml PCR tubes with flat cap			
Material	virgin Polypropylene			
Compatibility	Compatible with most Thermal Cycler products on the market			
Tube Type	NP, Clear 102.5100 (3423.X)	NP, Assorted Colors 3423.A.X	NP, Clear, Pre-Sterile 102.5100 (3423.S.X)	NP, Assorted Colors Pre-Sterile 102.5102 (3423.AS.X)
Quantity	Bulk, Tubes & Deckel			
Packaging	1000 Tubes/Packung ; 10 Packungen/Karton			
Autoclavable	Autoklavable at 121°C for 15 minutes at 15 PSI			
Production Standards and Processes	Product is assembled under a rigorous quality control system in a RNase/DNase free white room in accordance with ISO 9001:2000 standards. Biotix personnel are capped, masked, gloved and gowned in the assembly area. RNase/DNase free certification is verified for every lot as required.			



## Quality Control

Certificates of Compliance	Quality Control: Certificates of Compliance Each lot undergoes stringent inspection and individual lot testing ensures Neptune products are certified RNase, DNase, DNA and Endotoxin-free. If you contact us, we will provide you with a copy of the conformity certificate: <a href="http://www.labortechnik.com">www.labortechnik.com</a>
RNase/DNase	Products are washed in distilled water and concentrated via centrifugation. Samples are added to previously established nucleic acid standards, incubated for one hour at 37°C, and tested on a 2% gel using electrophoresis. Products must show no degradation of standards to pass. Test sensitivity is 10 <sup>-7</sup> Kunitz units/μl.
Nucleic Acid	Products are washed in distilled water and concentrated via centrifugation. Then, samples are added to protocol specified PCR reactions and thermal cycled for 50 cycles. A 2% agarose gel electrophoresis is used to examine experimental samples, positive controls, and negative controls. To pass, product samples must show no DNA amplification.
Endotoxin/Pyrogen	Products are tested for endotoxins by using the Limulus Amebocyte Lysate (LAL) gel assay according to FDA guidelines. Test sensitivity is 0.06 EU/ml.
Sterilization	Products are sterilized using electron beam irradiation.
Traceability	Each product contains a 5 digit lot number located on the rack, pack and case of each finished good. With Neptune's advanced manufacturing process all raw materials are able to be traced for maximum quality assurance.