

Filter Tip Barrier Tip BT200

Description

Each lot undergoes stringent inspection and individual lot testing ensures the products are certified.

*Exclusive S³ - Polymer was designed to increase pipetting accuracy by virtually eliminating tip retention and sample hold-up. This prevents liquids from sticking to the tip surface but sliding residue-free over the inside surface of the tip.

All filter tips are certified free of:

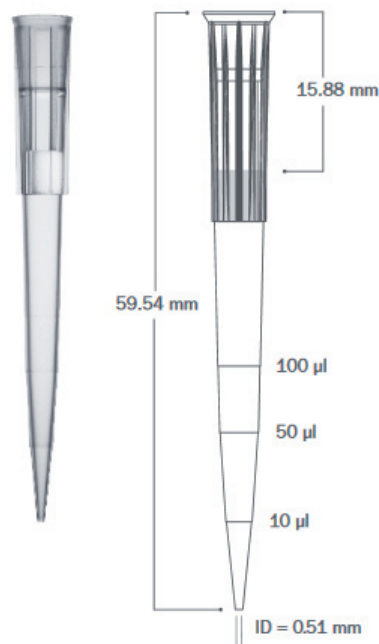
- DNA
- DNase & RNase
- Endotoxine (Pyrogene)

Part number:

BT200 (S³)*: 102.2210

BT200-ESP**: 102.2211 (S³ inclusive)

Environmental Sustainable Pack, Reload-System



Specifications

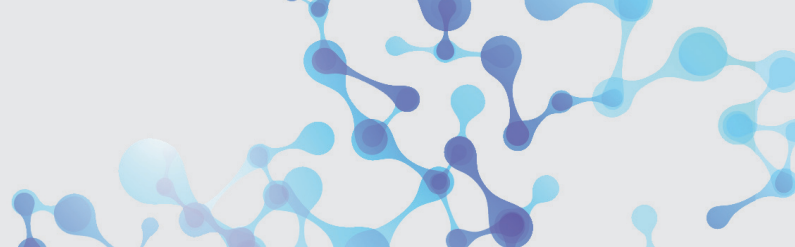
Graduation Marks	at 10µl, 50µl, 100µl	
Tip Composition	Virgin Polypropylene	
Tip Type	S ³ (Sample Saving Surface)*	
Filter Material	High Density Polyethylen	
Pre-Sterile	Yes	
Configuration	Racked	ESP Reload**
Packaging Breakdown	96 tips per rack 10 racks per pack 5 packs per case	96 tips per rack 10 racks per pack 4 packs per case
Autoclavable	No	
Storage Conditions	Store in a clean, dry environment at room temperature 15-30°C	

Pipettor Compatibility

Biohit™ M100 and M200
Biohit Proline Plus™ 100 µl (2090 Series)
Biohit Proline Plus™ 200 µl
Brand Transferpette S™ 200 µl
Brand Transferpette Electronic™ 300 µl
Capp™ 50 µl, 100 µl and 300 µl
CLP Beta-Pette™ 200 µl
CLP Poseidon™ 50 µl, 100 µl, 200 µl and 300 µl
CLP Poseidon Electronic™ 200 µl
Eppendorf Reference™ 200 µl

Eppendorf Research™ 100 µl (2090 Series)
Eppendorf Research™ 200 µl and 300 µl
Eppendorf Research Plus™ 200 µl
Eppendorf Xplorer™ 300 µl
Finnpipette™ 50 µl, 200 µl and 300 µl
Finnpipette™ Electronic 300 µl
Gilson Pipetman™ P200
Gilson Pipetman Ultra™ U200
Hamilton™ 25 µl, 100 µl and 300 µl

Nichiryo Nichipet EX™ 200 µl
Nichiryo Oxford Multimatte™ 300 µl
Socorex Calibri 822™ 200 µl
VWR Ergonomic High Performance™ 200 µl (2090 Series)
VWR Ergonomic High Performance™ 200 µl
VWR Ultra High Performance™ 200µl, 100 µl (2090 Series)
VWR Ultra High Performance™ 200 µ



Barrier Tips in Safety Rack

Benefits of Optimus Rack

Secured Tips

The locking clasp clicks to ensure the rack is securely closed giving you peace of mind when transporting or storing opened racks.

The rack is designed to withstand multiple drops off a lab bench, and to lock or unlock with one hand.

Stable Corners

Redesigned base has a larger footprint (SBS) allowing you to pipette of the corners without the tipping the rack.

Structural Support

A ribbing network is built into the base and snapcard to create a stable platform for multichannel pipetting, giving you secure seals on each channel.

Environmentally Conscious

The Optimus Rack is manufactured with 1/3 less plastic than leading competitor racks while providing top functionality and strength.



sample rack



less plastic

ESP-Racks

The ESP racks are even more environmentally friendly. The revolutionary reloading system allows you to reload your empty trays with new tips. And all this in just one operation.

The specially developed and patented transfer plate avoids contamination and minimizes the effort required for reloading empty tip racks.

Clever design with many advantages:

- Reload of 10 trays in just 90 seconds
- half space for storage
- 90% reduction of plastic waste

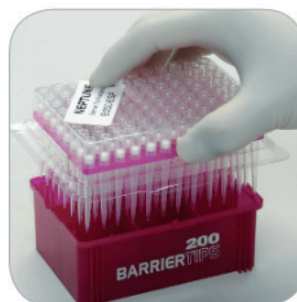
ESP-System for Barrier Tips



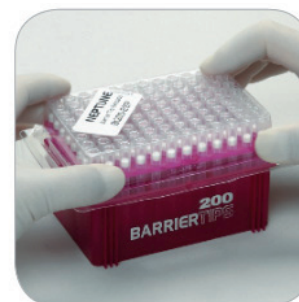
BT-ESP reloads are individually packaged to preserve the integrity of the aerosol barrier.



Remove alignment plate from the packaging base by gripping alignment plate using the upper portion of the clamshell packaging.



Insert the tips into your empty tray.



Secure plate by firmly pressing on all four corners of the alignment plate.