

Filter Tips

Barrier Tips BT20

Description

Each lot undergoes stringent inspection and individual lot testing ensures the products are certified.

*Exclusive S³ - Polymer was designed to increase pipetting accuracy by virtually eliminating tip retention and sample hold-up. This prevents liquids from sticking to the tip surface but sliding residue-free over the inside surface of the tip.

All filter tips are certified free of:

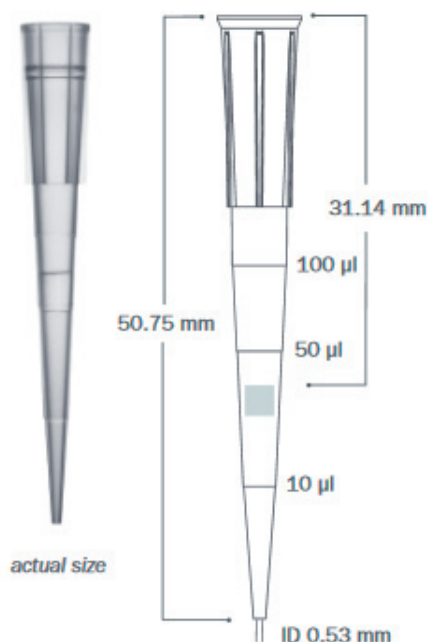
- DNA
- DNase & RNase
- Endotoxine (Pyrogene)

Part number:

BT20 (S³)*: 102.2206

BT20-ESP**: 102.2207 (S³ inklusive)

**Environmental Sustainable Pack, Reload-System (s. Page 2)



Specifications

Graduation Marks	at 10µl	
Tip Composition	Virgin Polypropylen	
Tip Type	S ³ (Sample Saving Surface)*	
Filter Material	High Density Polyethylen	
Pre-Sterile	Yes	
Configuration	Racked	ESP Reload**
Packaging Breakdown	96 tips per rack 10 racks per pack 5 pack per case	96 tips per insert 10 inserts per pack 4 pack per case
Autoclavable	No	
Storage Conditions	Store in a clean, dry environment at room temperature 15-30°C	

Pipettor Compatibility

Biohit™ M100 and M200

Biohit Proline Plus™ 100 µl and 200 µl

Brand Transferpette S™ 20 µl, 100 µl and 200 µl

Brand Transferpette Electronic™ 300 µl

Capp™ 50 µl, 100 µl, and 300 µl

CLP Beta-Pette™ 20 µl, 100 µl and 200 µl

CLP Poseidon™ 50 µl, 100 µl, 200 µl and 300 µl

CLP Poseidon Electronic™ 200 µl

Eppendorf Reference™ 20 µl, 100 µl and 200 µl

Eppendorf Research™ 20 µl, 100 µl, 200 µl and 300 µl

Eppendorf Research Plus™ 20 µl and 100 µl

Eppendorf Xplorer™ 20 µl and 100 µl

Finnpipette™ 20 µl, 50 µl, 200 µl and 300 µl

Finnpipette™ Electronic 300 µl

Gilson Pipetman™ P20, P100 and P200

Gilson Pipetman Ultra™ U20 and U200

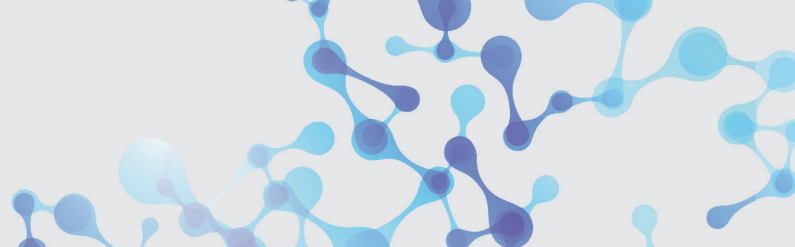
Hamilton™ 25 µl, 100 µl and 300 µl
Nichiryo Nichipet EX™ 20 µl, 100 µl and 200 µl

Nichiryo Oxford Benchmate™ 20 µl
Nichiryo Oxford Multimate™ 50 µl and 300 µl

Socorex Calibri 822™ 100 µl and 200 µl

VWR Ergonomic High Performance™ 20 µl and 200 µl

VWR Ultra High Performance™ 20 µl, 100 µl and 200 µl



Barrier Tips in Safety Rack

Benefits of Optimus Rack

Secured Tips

The locking clasp clicks to ensure the rack is securely closed giving you peace of mind when transporting or storing opened racks.

The rack is designed to withstand multiple drops off a lab bench, and to lock or unlock with one hand.

Stable Corners

Redesigned base has a larger footprint (SBS) allowing you to pipette of the corners without the tipping the rack.

Structural Support

A ribbing network is built into the base and snapcard to create a stable platform for multichannel pipetting, giving you secure seals on each channel.

Environmentally Conscious

The Optimus Rack is manufactured with 1/3 less plastic than leading competitor racks while providing top functionality and strength.



sample rack



less plastic

ESP-Racks

The ESP racks are even more environmentally friendly. The revolutionary reloading system allows you to reload your empty trays with new tips. And all this in just one operation.

The specially developed and patented transfer plate avoids contamination and minimizes the effort required for reloading empty tip racks.

Clever design with many advantages:

- Reload of 10 trays in just 90 seconds
- half space for storage
- 90% reduction of plastic waste

ESP-System for Barrier Tips



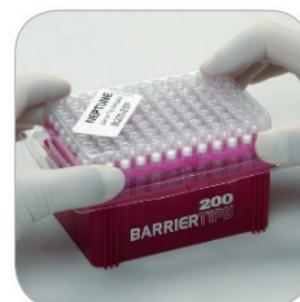
BT-ESP reloads are individually packaged to preserve the integrity of the aerosol barrier.



Remove alignment plate from the packaging base by gripping alignment plate using the upper portion of the clamshell packaging.



Insert the tips into your empty tray.



Secure plate by firmly pressing on all four corners of the alignment plate.