



# TurboQ Real-Time PCR-Cycler

## Description

The TurboQ Real-Time PCR system is designed for multiplex and routine PCR applications with up to four targets.

TurboQ contains the mature core competence of the proven TurboCycler series and offers additional features for diagnostic tests and research.

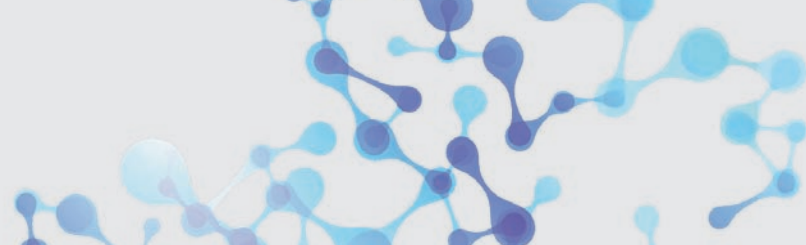


## Features

- **4 optical channels**  
Detects up to four targets in one well.
- **Motorized Plate Carrier Tray**  
Plate in/out with a simple click, enables automation integration in the future.
- **Software with Complete Analysis Functions**  
Functions include Absolute Quantitation, Relative Quantitation, Allelic Discrimination, Melting Curve. No need to purchase extra analysis modules.
- **CCD-Based Detection System**  
The entire plate can be detected at once to eliminate reaction-time differences.
- **+/- 0.25°C Block Temperature Control Accuracy**  
Ensures experiment condition stability and eliminates uncertainty.

## General Technical Data

System Requirements	Windows 7 or higher
Dimensions (H x W x D)	567 x 354 x 455 mm
Weight	35 kg
Power Supply	230 V, 50/60 Hz 5A for 220VAC
Power	1500 Watt
Fuse	1 x fuse



# TurboQ Real-Time PCR-Cycler

## Specifications

<b>Sample Block</b>	
Block Capacity	96 well Compatible with regular profile or low profile PCR tubes
Tube Volume	0.2 ml PCR striptubes, non-skirted, semi-skirted or full-skirted 96 well plates
Plate Loading	Motorized plate carrier tray
<b>Block Temperature</b>	
Temperature Range	25 - 99 °C
Peak Block Ramp Rate	2.5 °C/sec
Temperature Accuracy	± 0.25 °C (35 – 95 °C) of set point/ display temperature Measured at 3 minutes after start.
Temperature Uniformity Across Block	± 0.5 °C (30 seconds after clock start)
<b>Gradient Temperature</b>	
Gradient Temperature Range	60 - 99 °C
Temperature Difference	Max. span 25 °C
<b>Lid Heating</b>	
Heating Lid	105 °C
<b>Optics</b>	
Excitation Source	Tungsten Halogen Lamp
Detection Module	CCD Camera
Detection Channel	4 channels Ch1: FAM, SYBR Green Ch2: HEX, VIC, TET Ch3: ROX, Texas Red Ch4: Cy5
<b>Environment</b>	
Operating Temperature	15 - 30 °C
Operating Humidity	RH: 85% or less
Storage Temperature	-10 – +60°C