

# Plastic Water Bath MKWB Series

## Description

Sturdy water baths in various sizes made of polypropylene. They offer very good thermal insulation and are space-saving. The smooth surfaces and rounded inner edges make them excellent for sterile cleaning. Even at high temperatures, there is no risk of burning on the outer walls. Resistant to many acids.

## Specifications

- Microprocessor-controlled PID controller
- Three programmable fixed temperatures
- adjustable lower and upper setpoint limits
- adjustable key lock
- Limit value alarm visual and/or audible, alarm circuit can be switched off
- Temperature setting in Celsius or Fahrenheit
- Dry-heat protection integrated in the radiator
- Protection class 1 - unsupervised operation with non-flammable liquids is possible



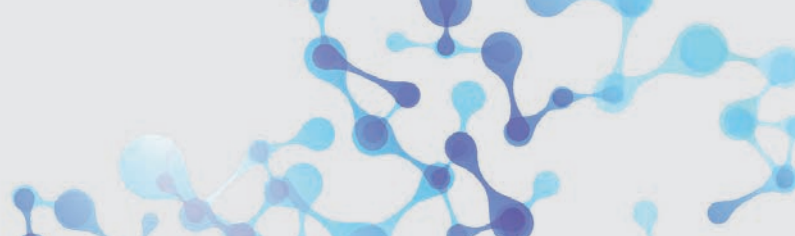
Water bath MKWB 5



Water bath MKWB 150

## Technical Data

Model	MKWB 5	MKWB 12	MKWB 25	MKWB 55	MKWB 150
Heating time (20 to 70°C)	< 4.5 min/l	< 2.8 min/l	< 1.8 min/l	< 1.6 min/l	< 1.6 min/l
Heat emission	< 65 W/h	< 80 W/h	< 100 W/h	< 115 W/h	< 115 W/h
Bath volume	2 – 6 l	4 – 12 l	6 – 25 l	10 – 55 l	15 – 150 l
Opening	215 x 230 mm	390 x 230 mm	450 x 230 mm	680 x 350 mm	900 x 560 mm
Bath depth	120 mm	120 mm	170 mm	190 mm	300 mm
Temperature range	25 – 90°C	25 – 90°C	25 – 90°C	25 – 90°C	25 – 90°C
Temperature uniformity (at 70°C in water)	± 0.2 K	± 0.2 K	± 0.2 K	± 0.2 K	± 0.2 K
Ambient temperature	1 – 40°C	1 – 40°C	1 – 40°C	1 – 40°C	1 – 40°C
Heating capacity	1.0 kW	1.6 kW	2.0 kW	2.0 kW	2.6 kW
Dimensions (W x D x H)	370 x 255 x 180 mm	540 x 255 x 180 mm	600 x 255 x 290 mm	840 x 380 x 250 mm	1100 x 600 x 300 mm



## Plastic Water Bath MKWB Series



Figure	Designation	Description		Suitable for model...
	FL 5-1	Flat lid 5, 1 opening	∅ = 130 mm	MWB 5
	FL 5-2	Flat lid 5, 2 openings	∅ = 92 mm	MWB 5
	FL 10-3	Flat lid 10, 3 openings	∅ = 130 mm	MWB 10
	FL 10-6	Flat lid 10, 6 openings	∅ = 92 mm	MWB 10
	FL 20-3	Flat lid 20, 3 openings	∅ = 130 mm	MWB 20
	FL 20-8	Flat lid 20, 8 openings	∅ = 92 mm	MWB 20
	WR 130	Water bath rings 6-piece	∅ = 130 mm	FL 5-1; FL 10-3, FL 20-3
	WR 92	Water bath rings 4-piece	∅ = 92 mm	FL 5-2; FL 10-6, FL 20-8
	AH	Drain tap, complete		MWB 5 to MWB 80
	FK 10	Retaining clip for Erlenmeyer flasks	10 ml	MSB 21
	FK 25	Retaining clip for Erlenmeyer flasks	25 ml	MSB 21
	FK 50	Retaining clip for Erlenmeyer flasks	50 ml	MSB 21
	FK 100	Retaining clip for Erlenmeyer flasks	100 ml	MSB 21
	FK 250	Retaining clip for Erlenmeyer flasks	250 ml	MSB 21
	FK 500	Retaining clip for Erlenmeyer flasks	500 ml	MSB 21
	FK 1000	Retaining clip for Erlenmeyer flasks	1000 ml	MSB 21
	Test tube racks in different sizes available on request.			