

# Orbital CO<sub>2</sub> Shaker KM

## Description

Smart stainless steel shaker with circular shaking motion. Optimally suited for use in CO<sub>2</sub> incubators with up to 20% CO<sub>2</sub> concentration and up to 95% humidity. Operation by remote control and cable feed-through

## Loading Capacity

Erlenmeyer flasks 100 ml 9 pieces

Erlenmeyer flasks 500 ml 2 pieces

## Two Models

Model KM: Connection with cable bushing

Model KM FL: with ribbon cable  
Connection without cable feed-through possible (through door opening)



CO<sub>2</sub> shaker KM



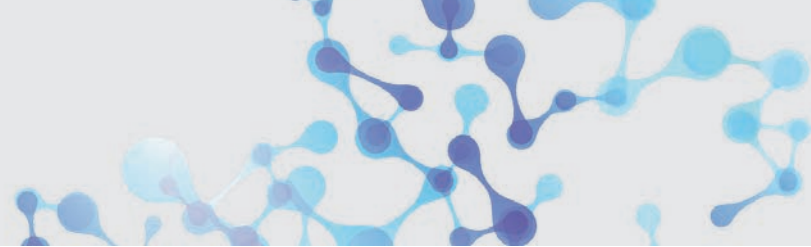
CO<sub>2</sub> shaker KM FL, with flat cable does not require a cable feed-through on the incubator

## Technical Data

Shaking motion	orbital
Shaking speed	5 - 220 rpm* (in steps of 5)
Runtime	1 s – 100 h / continuous
Max. load	2 kg
Stroke	20 mm
Relative humidity	20 – 95%
Ambient temperature	4°C – 45°C
CO <sub>2</sub> concentration	20%
Dimensions (W x D x H)	230 x 340 x 145 mm
Dimensions shaking platform	200 x 295 mm
Weight	7.6 kg
Electrical supply	100 – 240 V, 50/60 Hz
Heat emission	approx. 0.5 – 1.5 W
Enclosure protection	IP 21

## Basic Equipment

Basic device incl. basic platform with rubber mat and external control unit with ribbon cable



# Orbital CO<sub>2</sub> Shaker KM

## Optional Platforms



### Universal Platform KM Mini



Loading Capacity Universal Tray KM Mini  
Spring clamps (stainless steel)

Size	10 ml	25 ml	50 ml	100 ml	250 ml	500 ml	1000 ml	2000 ml
Max. pieces	23	15	15	15	6	4	3	1

Coated tray with drillings for individual loading with spring clamps or test tube racks.

Please note:

For fastening test tube racks on a universal tray test tube rack and hinged foot are necessary.

### Universal Platform KM



Loading Capacity Universal Tray KM Mini  
Spring clamps (stainless steel)

Size	10 ml	25 ml	50 ml	100 ml	250 ml	500 ml	1000 ml	2000 ml
Max. pieces	58	29	27	24	12	8	5	2

Coated tray with drillings for individual loading with spring clamps or test tube racks.

Please note:

For fastening test tube racks on a universal tray test tube rack and hinged foot are necessary.