

Centrifuge LMC-56

Description

LMC-56 is a modern benchtop, low speed laboratory centrifuge. Especially suitable for convenient sedimentation, centrifugation and collection of necessary samples.

It provides operation with tubes, blood collection systems, gel cards, microtest and ELISA plates.

Ensures safe operation (metal protecting housing), easy maintenance and wide application range in medical, biochemical, chemical, industrial and other type of laboratories.

Specifications

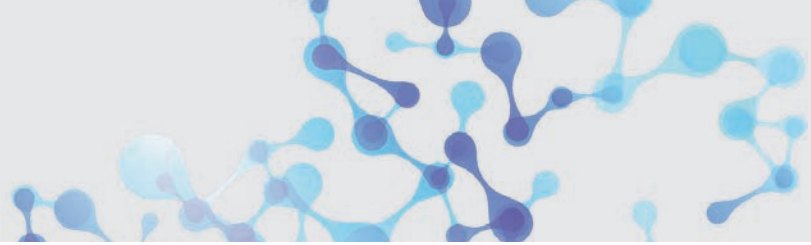
- User-friendly centrifugation parameter input and simultaneous display of the set and actual parameter values.
- Safe assay performance: metal protective housing and metal lid, automatic imbalance switch-off, lid lock during the centrifuge operation provide safe operation at all speeds.
- Rotor imbalance automatic diagnostics (emergency stop, imbalance indication).
- Automatic rotor detection with active rotational speed limit.
- Relatively high speed – maximum 6,000 rpm or 3,750 g.
- Wide choice of accessory rotors and adapters. (s. following pages)
- Improved chamber to reduce sample heating during centrifugation.
- Different modes of acceleration and deceleration, including deceleration mode with switched off forced braking.
- Possibility to set the speed both in revolutions per minute and by relative centrifugal force.



Centrifuge LMC-56



LMC-56 with rotor BR-4U, see page 3)

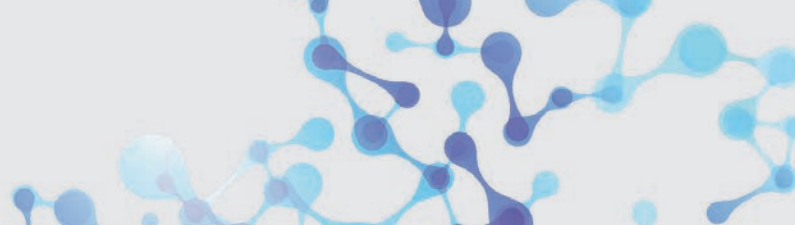


Centrifuge LMC-56



Technical Data

Speed regulation range for centrifuge tubes	100 – 6000 rpm (3750 x g)
Speed regulation range for microtitre plates	100 – 2000 rpm (560 x g)
Setting resolution	100 rpm
Digital time setting	1 – 90 min (increment 1 min)
Timer sound signal	Yes
Rotor imbalance diagnostics (automatic stop, "IMBALANCE" warning)	Yes
Rotor detection	Yes
Display	LCD, 2 x 16 signs
Chamber diameter	335 mm
Overall dimensions (W x D x H)	560 x 480 x 315 mm
Weight	16.5 kg
Nominal operating voltage	230 V, 50/60 Hz
Power consumption (230 V)	320 W
Order No. centrifuge LMC-56 without rotors Please order rotors separately	109.3085



Rotors and Accessories for LMC-56

Rotor BR-4U

Swing-out Rotor without Adapters

Max. speed: 4200 rpm



Matching accessories for rotor BR-4U



Adapter BA-2/50

For 2 centrifuge tubes à 50 ml (set of 4 pcs.)

Material tube holders	Aluminium
Rotor type	Swing-out
Tube dimensions (∅ x length)	29 x 115 mm
Capacity	2
Tube volume	50 ml
Max. speed	4200 rpm
Matching tubes	Falcon, Greiner, Bio-one, Sarstedt, Corning, Nunc, etc.



Adapter Set BI-25-8

For 25 ml conical tubes
Suitable for BA-2/50
Optional adapter set (8 pcs)



Adapter BA-4/15

For 4 centrifugal tubes à 15 ml (set of 4 pcs.)

Material tube holders	POM Kocetal
Rotor type	Swing-out
Capacity	4
Tube volume	15 ml
Max. speed	4200 rpm
Matching tubes	Falcon, Greiner, Bio-one, Sarstedt, Corning, Nunc, etc.



Adapter BA-4/10

For 4 centrifugal tubes à 10 ml (set of 4 pcs.)

Material tube holders	POM Kocetal
Rotor type	Swing-out
Capacity	4
Tube volume	10 – 15 ml
Max. speed	4200 rpm
Matching tubes	Falcon, Greiner, Bio-one, Sarstedt, Corning, Nunc, etc.



BN-13/75-16

BN-16/100-16

BN-13/100-16

Adapter-Set BN-13/75-16

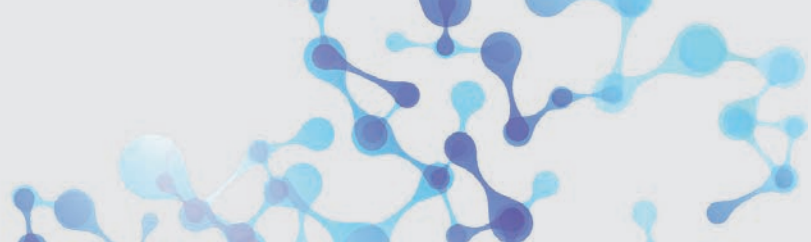
Vacutainer for 2 – 5 ml
For adapter BA-4/10 optional adapter set (16 pcs)

Adapter-Set BN-13/100-16

Vacutainer for 4 – 8 ml
For adapter BA-4/10 optional adapter set (16 pcs)

Adapter-Set BN-16/100-16

Vacutainer for 8 – 10 ml
For adapter BA-4/10 optional adapter set (16 pcs)



Rotors and Accessories for LMC-56

Matching accessories for rotor BR-4U



Adapter BA-8/5
For 8 centrifugal tubes à 5 ml (set of 4 pcs.)
Material tube holders POM Kocetal
Rotor type Swing-out
Capacity 8
Tube volume 5 ml
Max. speed 4200 rpm



Adapter BA-14/2U
For 14 centrifugal tubes à 2 ml (set of 4 pcs.)
Material tube holders POM Kocetal
Rotor type Swing-out
Capacity 14
Tube volume 2 ml
Max. speed 4200 rpm
Matching Tubes Falcon, Greiner, Bio-one, Sarstedt, Corning, Nunc, etc.

More Rotors for Centrifuge LMC-56



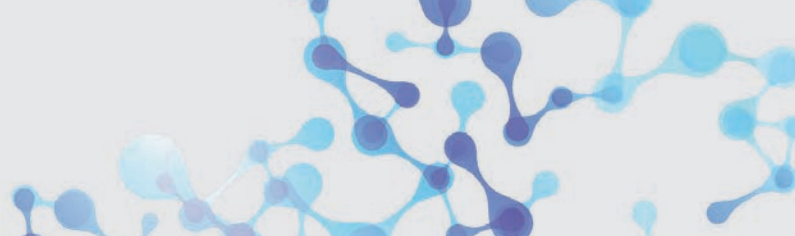
Rotor Ri-6
For 6 centrifugal tubes with conical bottom.
Material tube holder Aluminium
Rotor type Swing-out
Tube dimensions (Ø x length) 29 x 115 mm
Capacity 6
Tube volume 50 ml
Max. speed 4200 rpm
Matching Tubes Falcon, Greiner, Bio-one, Sarstedt, Corning, Nunc, etc.
Autoclavable Yes



Rotor Ri-6P
For 6 centrifugal tubes with conical bottom.
Material tube holder POM Kocetal
Rotor type Swing-out
Tube dimensions (Ø x length) 29 x 115 mm
Capacity 6
Tube volume 50 ml
Max. speed 4200 rpm
Matching Tubes Falcon, Greiner, Bio-one, Sarstedt, Corning, Nunc, etc.
Autoclavable Yes



Adapter for Ri-6 and Ri-6P
Adapter set with 6 pieces, for 25 ml conical tubes.



Rotors and Accessories for LMC-56



Rotor RMT-24

Fixed-angle rotor for 24 x 1.5 or 2 ml microtubes.

Rotor type	Fixed-angle
Capacity	24
Tube volume	1.5 ml or 2 ml
Max. speed	6000 rpm



Rotor Ri-12/15

For centrifugal tubes with conical bottom.

Rotor type	Swing-out
Dimensions (Ø x length)	17 x 120 mm
Capacity	12
Tube volume	15 ml
Max. speed	4200 rpm
Matching tubes	Falcon, Greiner, Bio-one, Sarstedt, Corning, Nunc, etc.
Autoclavable	Yes



Rotor Ri-12/10

For centrifugal tubes with round bottom.

Rotor type	Swing-out
Dimensions (Ø x length)	16 x 105 mm
Capacity	12
Tube volume	10 – 15 ml
Max. speed	4200 rpm
Matching tubes	Greiner, Bio-one, TPP, Nunc, etc.
Autoclavable	Yes



BN-13/75

BN-13/100

BN-16/100

Adapter set BN-13/75

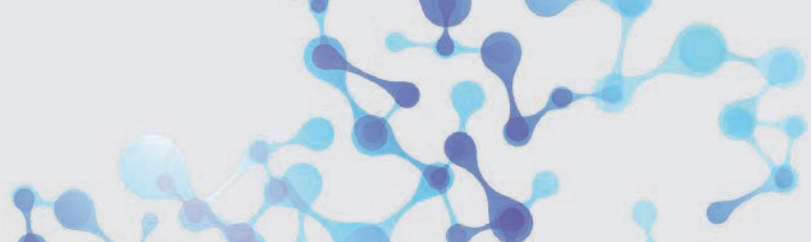
Vacutainer 2 – 5 ml
For Rotor Ri-12/10
Adapter set: 12 pcs

Adapter set BN-13/100

Vacutainer 4 – 8 ml
For rotor Ri-12/10
Adapter set: 12 pcs

Adapter set BN-16/100

Vacutainer 8 – 10 ml
For rotor Ri-12/10
Adapter set: 12 pcs



Rotors and Accessories for LMC-56



Rotor Ri-24/10

For centrifugal tubes with round bottom.

Matrial tube holder	POM Kocetal
Rotor type	Swing-out
Capacity	24
Tube volume	10 – 15 ml
Max. speed	4000 rpm
Matching tubes	Greiner, Bio-one, Nunc, TPP etc.
Autoclavable	Yes



BN-13/75-24



BN-13/100-24



BN-16/100-24

Adapter set BN-13/75-24

Vacutainer 2 – 5 ml
For rotor Ri-24/10
Adapters set: 24 pcs

Adapter-Set BN-13/100-24

Vacutainer 4 – 8 ml
For rotor Ri-24/10
Adapters set: 24 pcs

Adapter-Set BN-16/100-24

Vacutainer 8 – 10 ml
Für rotor Ri-24/10
Adapters set: 24 pcs



Rotor Ri-24GC

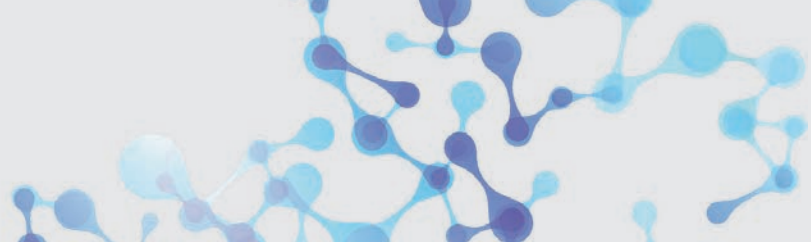
Swing-out rotor for gel cards.

Rotor type	Swing-out
Card dimensions (L x W)	53 x 74 mm
Capacity	24 gel cards
Max. speed	1500 rpm
Matching gel cards	Grifols, DiaMed, etc.
Autoclavable	Yes



Rotor Holder RR-U

Holder for all rotors of centrifuge LMC-56



Rotors and Accessories for LMC-56



Rotor Ri-2

Swing-out rotor for standard 96 well microtitre plates

Rotor type	Swing-out
Platform dimensions (w x l)	128 x 85.6 mm
Max. Height	up to 45 mm
Capacity	2
Max. speed	2000 rpm
Matching tubes	Greiner, Bio-one, Sarstedt, Corning, Nunc, etc.
Autoclavable	Yes

Adapter AP-96 für Rotor Ri-2

2 Adapter for 96 well semi-skirted and non-skirted PCR plates



Material	Ertacetal® C
Capacity	2
Plate volume	96 well
Max. speed	4200 rpm
Autoclavable	Yes

Adapter AP-384 for Rotor Ri-2

2 Adapter for 384-Well PCR plates



Material	Ertacetal® C
Capacity	2
Plate volume	384 well
Max. speed	4200 rpm
Autoclavable	Yes