

UV Incubator

Description

The UV Incubator is a benchtop device for incubation and UV sterilization. The unit has precise temperature control and high temperature uniformity for incubation of biological assays, fungal or bacterial cultures, eggs and other samples up to 68°C.

To sterilize the incubation chamber between experiments, the instrument is equipped with UV tubes that emit short-wave (254 nm) UV light.

By applying the germicidal properties of UV light, viable fungi, bacteria and yeasts can be killed and cross-contamination between experiments avoided.

To protect users, the incubator door blocks UV light and does not allow radiation to pass through. The germicidal UV lamp is automatically switched off as soon as the door is opened.

Therefore, there is no risk of damage to unprotected skin areas or the eyes from the intense UV radiation. For safety, the UV incubator provides an automatic decontamination protocol using high-intensity, short-wavelength UV light.

In addition, the interior of the unit is made of stainless steel and can be easily cleaned with non-aggressive, mild detergents.

The instrument is equipped with two stainless steel trays that can be inserted in three different positions. This flexible adjustment allows the simultaneous incubation of samples of different sizes.

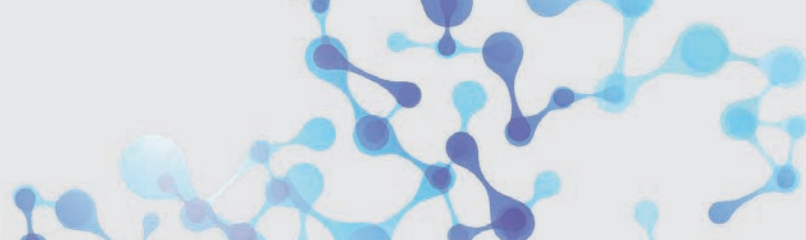


UV Incubator

Item Number: 110.4320

Specifications

- Minimal space required on the work table
- Heating element and fan create constant temperatures inside the chamber
- Temperature range: RT +3°C to 68°C maximum; Accuracy $\pm 0.5^\circ\text{C}$
- Temperature uniformity: $+0.5^\circ\text{C}$ at 37°C
- Reliable sterilization by short-wave UV light (254 nm).
- The clear polycarbonate door allows easy observation of samples and UV protection
- Two air-permeable shelves are included. These can be removed and up to a maximum of 150 x 10 cm agar plates can be incubated
- Easy-to-clean stainless steel interior
- Housing made of robust, powder-coated aluminum



UV Incubator

Technical Data

Temperature	
Range	RT +3°C – 68°C
Sensor	LM345 Integrated Temperature Sensor
Controller	PI
Setpoint	Digital
Display	Digital LED
Accuracy	±0.5°C
Uniformity	±0.5°C bei 37°C
Relative Humidity (Interior)	~ 80%
Unit Heat Load	
Typical Operation	Incubation
Heating Element	1.250 Watt
Dimensions	
Exterior (W x H x D)	44.5 x 43.2 x 35.6 cm
Interior (W x H x D)	35.6 x 27.2 x 27.7 cm
Shelves	
Dimensions (W x D)	33.8 x 21.6 cm
Construction	Formed stainless steel
Surface	729.35 cm ²
Construction	
Volume Interior	26.9 liters
Material Interior	Stainless steel
Exterior cladding	Aluminium powder coated
Door	Acrylic
Weight	21.3 kg
Voltage	230 V, 60 Hz
Additional Specifications	
Degree of pollution	2%
Installation category	II
Environmental conditions	5°C up to 40°C, max. 2.000m NN
Indoor operation	The incubator is designed for operation inside a building only.
Power supply	Not to exceed 10 % of the nominal supply voltage.
Maximum power consumption	1.150 Watt