

## Bio RS-24 Mini Rotator

Mini Rotator Bio RS-24 provides vertical rotation of the platform. The rotator is an ideal instrument for preventing blood coagulation in tubes and for fulfilment of procedures of biological components extraction.

The device is simple to operate; it is designed as a low cost solution.

Rotator can be used in cold rooms or incubators, operating at ambient temperature range +4°C to +40°C.

The RS-24 Mini Rotator offers three different platforms (see page 2).



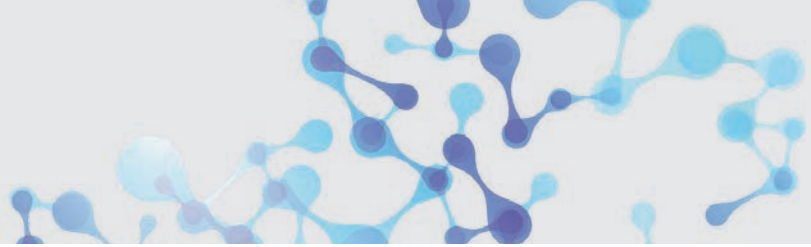
Bio RS-24 Mini Rotator with plattform PRS-22

### Technical Data

Speed control range	5 - 30 rpm
Digital time setting	1 min - 24 h (non-stop)
Vertical rotation movement	Overhead, 360°
Maximum continuous operation time	8 h
Overall dimensions (WxDxH)	325 x 190 x 155 mm
Weight	1.4 kg
Input current/power consumption	12 V, 110 mA 1.3 W
External power supply	Input AC 100–240 V 50/60 Hz; Output DC 12 V



Bio RS-24 Mini Rotator with platform PRS-22



## Bio RS-24 Mini Rotator

### Available Platforms

**PRS** - series platforms are equipped with universal rubber clamps for different size tube fixation;  
**PRSC** - series platforms have metal clamps able to hold heavier solutions (e.g. soil, sand)



**PRS-22**  
Max. capacity:  
22 tubes with  $\varnothing$  10-16 mm

Volume:  
10 x 1.5 tubes  
12 x 15 ml tubes



**PRS-4/12**  
Max. capacity: 16 tubes  

- 4 tubes with  $\varnothing$  20-30 mm (50 ml)
- 12 tubes with  $\varnothing$  10-16 mm

Volume:  
4 x 50 ml tubes  
12 x 1,5 - 15 ml tubes



**PRSC-18**  
Max. capacity:  
18 tubes with 4 x 50 ml tubes  
12 x 1,5 - 15 ml with  $\varnothing$  16 mm

Volume:  
18 x 15 ml tubes