

# EzDrop Spectrophotometer for Micro-Volume Measurements

## Description

EzDrop 1000 Micro-Volume Spectrophotometer accelerates your research efficiency. It can complete the measurement of a sample concentration speedily in 3 seconds.

EzDrop provides dynamic full-spectrum 190-1000 nm detection, while the sample window is equipped with Nano hydrophobic coating, ensuring highly accurate results.

Coming with an intuitive operation screen, EzDrop makes each step fast and simple, helping you complete the measurement effortlessly.



## Specifications

- Built-in intuitive graphic interface is easy to use, and can be operated without extra computing equipment, saving space in the laboratory.
- Multiple built-in functions allow you to measure nucleic acids, proteins, cells and other samples with the touch of a button.
- Automated measuring function raises the speed and convenience of operation.
- Thoughtfully designed assist light (see fig.) makes up for the lack of ambient light, and minimizes sample placement errors.
- A layer of Nano hydrophobic coating on the sample window ensures the formation of sample column.
- Replacement sample window system greatly reduces the possibility of residual contamination.
- CV value of absorbance is < 1%.
- The cushion design on the detection arm reduces impact, which in turn reduces error in experiments.
- Data exchange: USB port



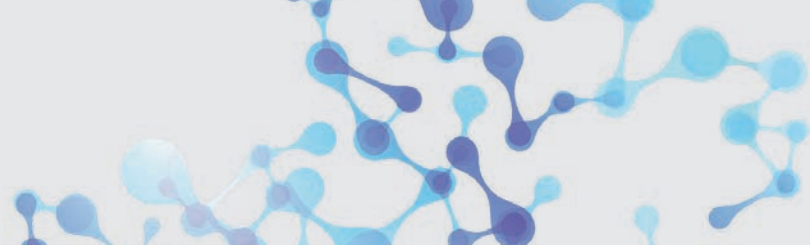
Fast measurement in 3 seconds



CV value of absorbance is < 1%



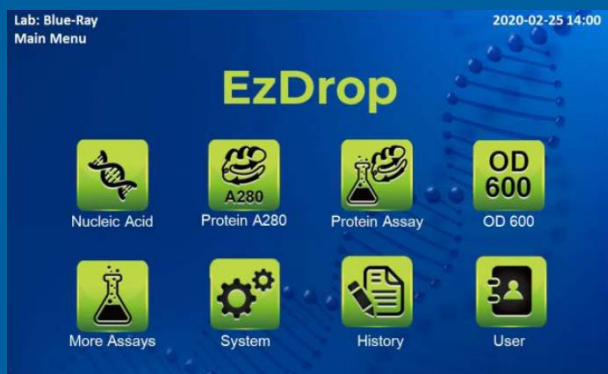
EzDrop Spectrophotometer open



# EzDrop Spectrophotometer

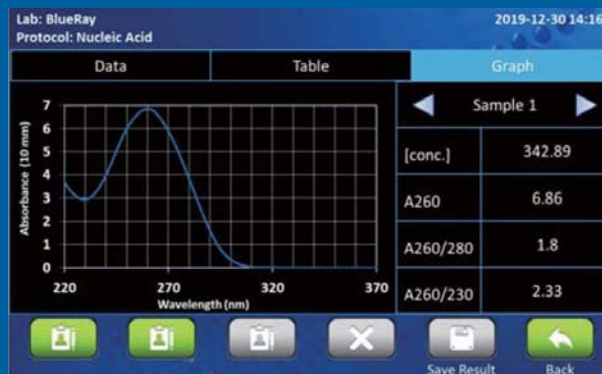
## Intuitive Graphic Interface

The built-in intuitive graphic interface is easy to use, and can be operated without extra computing equipment.



## Nucleic Acid Quantitation

Multiple built-in functions allow you to measure nucleic acids, proteins, cells and other samples with the touch of a button.



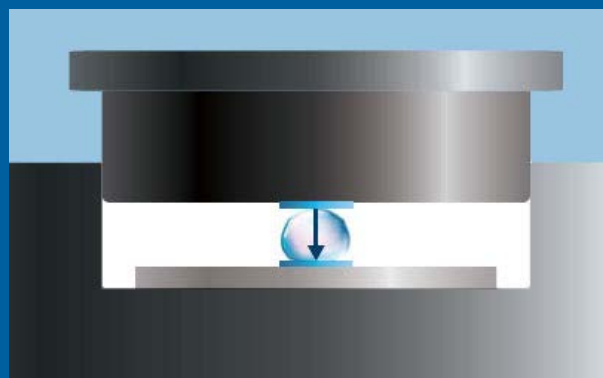
## LED Assist Light

The thoughtfully-designed assist light makes up for the lack of ambient light, and minimizes sample placement errors.

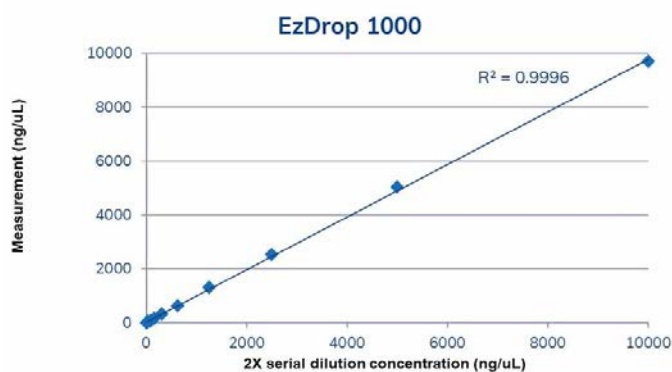


## Quality Guaranteed

A layer of Nano hydrophobic coating on the sample window ensures the formation of sample column.



## Example of a serial dilution with EzDrop



Sample concentration (ng/uL)	EzDrop 1000	
	Nucleic Acid (ng/uL)	A260/A280
10000	9710.536	1.91
5000	5033.347	1.90
2500	2538.602	1.86
1250	1307.317	1.83
625	634.667	1.84
312	319.044	1.79
156	158.433	1.77
78	80.729	1.65
39	41.712	1.54
20	21.835	1.46
10	11.297	1.21
5	4.4	1.66
2.5	2.222	1.57

# EzDrop 1000 Spectrophotometer

## Technical Data

Optics Information	
Sample Volume	1 µl Minimum Volume
Sample Number	1
Pathlength	0.5 mm / 0.05 mm
Light Source	Pulsed Xenon flash lamp
Detector Type	2048 element CMOS
Wavelength Range	190 - 1000 nm
Bandwidth	1.3 nm
Wavelength Accuracy	1.0 nm
Spectral Resolution	1.5 nm (FWHM at Hg 253.7 nm)
Absorbance Precision (raw)	0.001 A (0.5 mm)
Absorbance Precision	0.02 A (1 cm equivalent)
Absorbance Accuracy	3.0% at 0.97 A at 320 nm
Absorbance Range (1 cm equivalent)	0 (0.02) - 300 A
Detection Range	dsDNA: 2 - 15000 ng/µl
Sample Surface Material of Construction (Lower and Upper)	Stainless steel and quartz window with hydrophobic treatment
Measurement Time	< 3 sec
Software	
Operating System	Custom Linux based OS
Registered User Folder No.	50 sets
User Folder Password Protection	Yes



EzDrop Spectrophotometer

## General Technical Data

Display	7" color LCD with capacitive touch panel
Data Port	1 USB Type-A front port for USB flash drive
Footprint Dimensions (W x D x H)	206 x 166 x 333 mm
Weight	< 3.5 kg (< 7.8 lb)
Glove Compatibility	All common lab gloves
Internal Storage	32 GB flash memory
Power Adapter	Input: AC 240 V, 50/60 Hz Output: DC 24, 2.08 A
Certifications	CE, RoHS