

Tube Rotator L29

Description

Very flexible and robust tube rotator suitable for serial rotation of 4–40 mm test tubes. Holds up to 3 discs at a time. The speed is analog adjustable.

Due to its selection of different rotors, this unit can be used for a wide range of applications (see rotor overview on page 2). A stable device for many tube sizes.

Specifications

Number of positions	1 for max 3 disks
Rotation speed (adjustable)	1 – 50 rpm*
Speed control	analog
Angle of rotation	27° - 90° adjustable
max. load	2 kg
Dimensions (W x D x H)	200 x 200 x 270 mm
Weight	3.6 kg
Tube size Ø	4 - 40 mm
Motor rating input	40 W
Motor rating output	35 W
Disk material	Stainless steel
Material clamps	Steel, Nylon
Permissible ambient temperature	5 – 40 °C
Relative humidity	80 %
Voltage/Frequency	230 V, 50/60 Hz
Power input	60 W
Protection class according to DIN EN 60529	IP 42
Part No.	105.0050

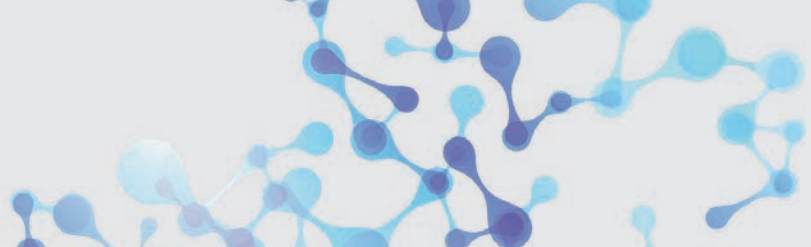


Tube rotator L29 with rack 20-9/12 and rack 12-25/28 (20 Klammern für 9-12 mm Tubes/12 Klammern für 25-28 mm)



Tube rotator L29 base unit

*Small irregularities may occur at rotations below 5 rpm, depending on the mains voltage.



Optional Racks for Tube Rotator L29



Rack 10-28/32
Disk with 10 clamps
for tubes of 28–32 mm Ø



Rack 10-32/40
Disk with 10 clamps
for tubes of 32–40 mm Ø



Rack 12-25/28
Disk with 12 clamps
for tubes of 25–28 mm Ø



Rack 15-22/25
Disk with 15 clamps
for tubes of 22–25 mm Ø



Rack 18-19/22
Disk with 18 clamps
for tubes of 19–22 mm Ø



Rack 20-16/19
Disk with 20 clamps
for tubes of 16–19 mm Ø



Rack 20-12/16
Disk with 20 clamps
for tubes of 12–16 mm Ø



Rack 20-9/12
Disk with 20 clamps
for tubes of 9–12 mm Ø



Rack 30-6/9
Disk with 30 clamps
for tubes of 6–9 mm Ø



Rack 40-4/6
Disk with 40 clamps
for tubes of 4–6 mm Ø



Rack 60
Drum with 60 well
for reagents