



# Mini-Centrifuge/Vortex FVL-2400N Combi-Spin

## Description

Combi-Spin FVL-2400N is specially designed for genetic engineering research (for PCR-diagnostics experiments). Unit can be used in microbiological, biochemical, clinical laboratories and industrial biotechnological laboratories.

Micro-Spin provides simultaneous mixing and separation of samples, using centrifuge and mixing modules, located on the common spin-module.

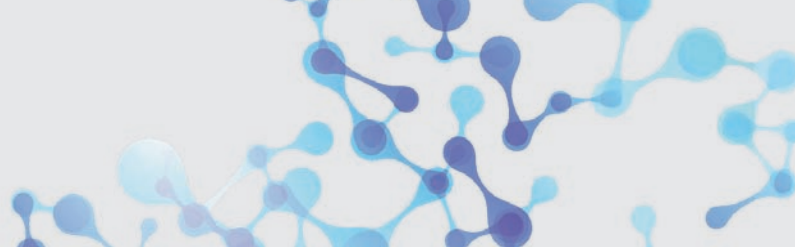
FVL-2400N is provided with protection mechanism that stops the rotor motion when the lid is opened.  
Item No.: 109.3050



Mini-Centrifuge Combi-Spin FVL-2400N

## Technical Data





Rotation speed (fixed)	2.800 rpm	3.500 rpm
Max. RCF	450 × g	700 × g
Continous and impulse operation modes	yes	
Safety	Stop at open lid	
Overall dimensions (W x D x H)	190 x 235 x 125 mm	
Weight	1.7 kg	
Nominal operating voltage	230 V; 50 Hz	230 V; 60 Hz
Power consumption	30 W (0.13 A)	25 W (0.1A)

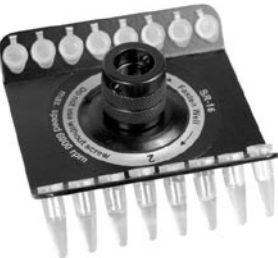



# Mini-Centrifuge/Vortex FVL-2400N Combi-Spin



## Rotors

R-0.5/0.2M	R-1.5M	R-2/0.5	R-2/0.5/0.2
			
Standard Rotor	Standard Rotor	Optional	Optional
Capacity: 24	Capacity: 12	Capacity: 16	Capacity: 18
12 x 0.5 ml and 12 x 0.2 ml microtubes	12 x 1.5 ml microtubes	8 x 1.5/2.0 ml and 8 x 0.5 ml microtubes	6 x 1.5/2.0 ml, 6 x 0.5 ml and 6 x 0.2 ml microtubes

SR-16	SR-32
	
Optional	Option
Capacity: 16	Capacity: 32
2 x 8 section For 0.2 ml microtubes or strip tubes	4 x 8 section For 0.2 ml strip tubes For all types of strip tubes  *not compatible with Combi- Spins produced before 2015.