



FV-2400 Microspin Mini-Centrifuge/Vortex

Description

Micro-Spin FV-2400 is specially designed for genetic engineering research (for PCR-diagnostics experiments). Unit can be used in microbiological, biochemical, clinical laboratories and industrial biotechnological laboratories.

Micro-Spin provides simultaneous mixing and separation of samples, using centrifuge and mixing modules, located on the common spin-module.

FV-2400 is an "open type" centrifuge (without lid), that increases the speed of centrifugation and resuspension operations.

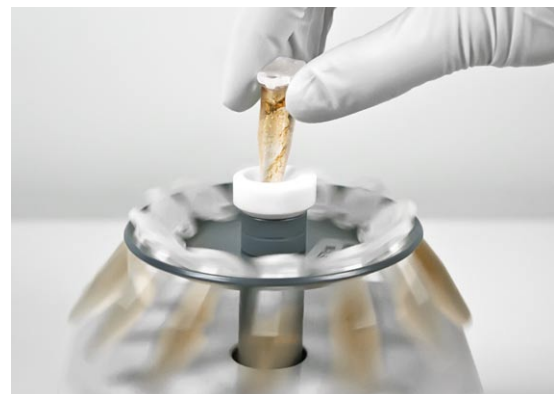
Six different rotors are available for this unit.
See page 2 for an overview.



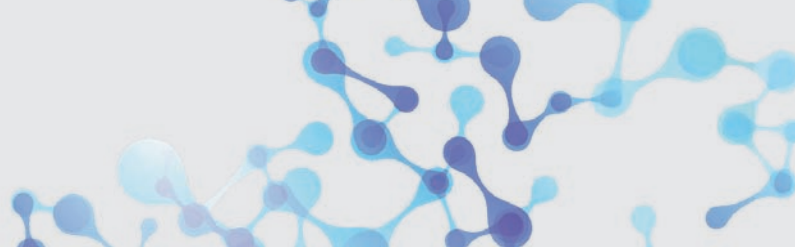
FV-2400 Microspin

Technical Data

Power Supply	50 Hz	60 Hz
Rotation speed (fixed)	2.800 rpm	3.500 rpm
Max. RCF	500 × g	700 × g
Continous and impulse operation modes	yes	
Overall dimensions (W x D x H)	120 x 170 x 120 mm	
Weight	1.4 kg	
Nominal operating voltage	230 V; 50 Hz	230 V; 60 Hz
Power consumption	25 W (0.1A)	25 W (0.1A)
Order No.	109.3040	



Tube vortexing on FV-2400



FV-2400 Micro-Spin Mini-Centrifuge / Vortex



Rotors

R-0.5/0.2M	R-1.5M	R-2/0.5	R-2/0.5/0.2
Standard Rotor	Standard Rotor	Optional	Optional
Capacity: 24	Capacity: 12	Capacity: 16	Capacity: 18
12 x 0.5 ml and 12 x 0.2 ml microtubes	12 x 1.5 ml microtubes	8 x 1.5/2.0 ml and 8 x 0.5 ml microtubes	6 x 1.5/2.0 ml, 6 x 0.5 ml and 6 x 0.2 ml microtubes

SR-16	SR-64
Optional	Optional
Capacity: 16	Capacity: 64
2 x 8 section for 0.2 ml microtubes or strip tubes	8 x 8 section for 0.2 ml microtube strips for all types of strip- tubes



Optional rotor SR-64 for microtube strips.