

Mini Centrifuge Microspin 12

Description

High-speed mini-centrifuge Microspin 12 is a compact desktop centrifuge designed for biomedical laboratories.

The external power supply unit allows operation of Microspin 12 in cold rooms (at ambient temperatures from +4°C to +40°C).

A brushless motor provides noiseless performance at the maximal speed and long service life. An angular rotor is designed for accommodation of 12 Eppendorf microtubes and spin columns.

The rotor is made of aluminium, it is equipped with fixing lid (standard specification). Constant airflow around the rotor reduces risk of samples overheating during operation.

Metal protective inserts inside the casing and lid, automatic imbalance switch-off and locking of a lid provide safe operation. Completion of centrifugation is indicated by a sound signal.

Applications

- Extracting RNA/DNA samples
- Sedimentation of biological components
- Biochemical and chemical analysis of microsamples

Display

A display simultaneously shows actual and set values for:

- Centrifugation time
- Set and actual speed values
- Relative centrifugal force



Microspin 12

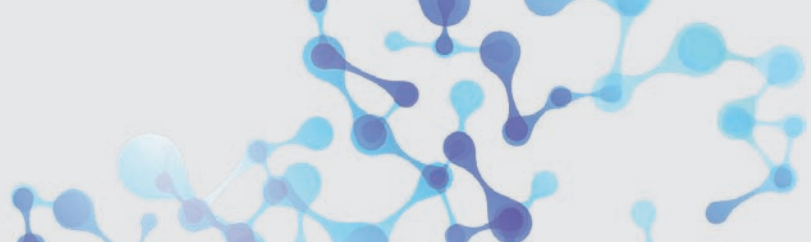
Standardset

(included in scope of delivery)

Standard rotor MSR-12 (12 places for microtubes 1.5/2 ml), lid MSL-SC and adapters A-02, A-05.

Accessories (option)

Adapter	Description
A-02 	12 pieces for 0.2 ml microtubes
A-05 	12 pieces for 0.5 ml microtubes
MSL-SC 	Spin Column Protector Higher rotor lid to accommodate spin columns



Mini-Zentrifuge Microspin 12



Technical Data

Speed control range	1.000 – 14.500 rpm (increment 100 rpm)
Relative centrifugal force control range	50 – 12.400 × g
Digital time setting	15 s – 30 min (increment 15 s – 1 rpm)
Timer sound signal	Yes
Acceleration time up to 14.500 rpm	20 s
Slowdown time, not more	10 s
Display	LCD, 2 line
Safety: Rotor imbalance diagnostics: automatic stop, "IMBALANCE" warning	Yes
Overall dimensions (W × D × H)	200 x 240 x 125 mm
Weight	3.5 kg
Input current/power consumption	24 V, 2.5 A / 60 W
External power supply	Input AC 100-240 V 50/60 Hz, Output DC 24 V
Order No.	109.0070