

Intelispeed Washer IW-8

Description

Intelispeed Washer IW-8 is designed for washing of standard flat-bottom 96 well plates and microstrips.

The unit is fully programmable ensuring multi-step solution ripening, aspiration (aspiration, combination of aspiration/liquid dispensing and soaking, as well as soaking cycle during a particular period of time).

The unit has 100 user-defined programs. Standard version is supplied with 8-channel washing head for dispensing/aspiration, 3 bottles for washing and rinsing solutions, a waste bottle and bottle with filter.

Optional 4-channel washing solution weight logger, 4 CHW Logger is available (see page 2)

The unit is designed for washing standard 96-well plates during analyses.

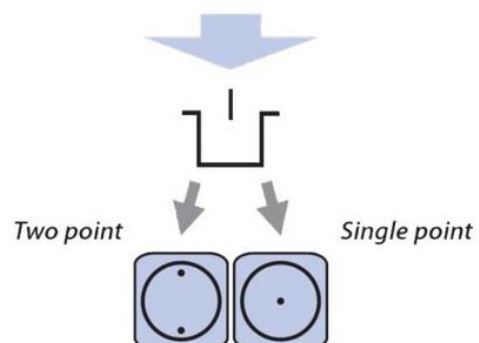
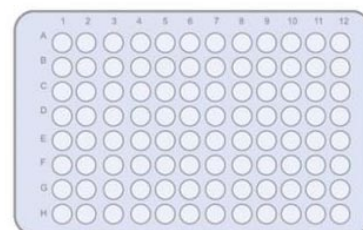
The unit is designed for use in closed laboratory rooms at temperatures from +10°C to +35°C and relative humidity up to 80% at +25°C decreasing linearly to 50% relative humidity at 35°C.



Intelispeed Washer with 4 CHW Logger

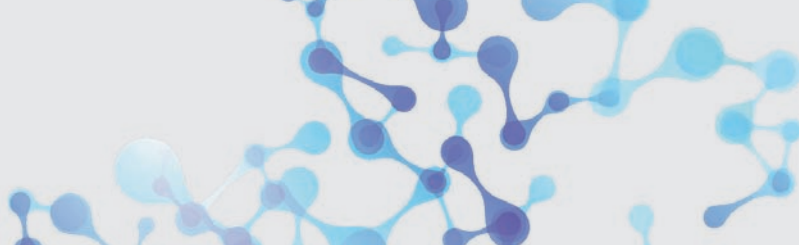


Aspiration schematics



The device offers

- Washing mode
- Rinsing mode
- Mixing mode
- Double aspiration
- Possibility of additional solution mixing during time gap between two work cycles
- Possibility to use microtest plates by different manufacturers, ensured by automated plate set up (adjusting to different depths of plate wells)
- Plate and strip washing mode
- User-defined programs with adjustable parameters
- Saving work programs



Intelispeed Washer IW-8

Technical Data

Max. – Minimum dispense volume	25 µl - 1600 µl
Dispense increment	25 µl
Dispensing accuracy	±2.5%
Allowed residual liquid volume in plate well	not more than 2 µl
Number of wells washed simultaneously	8
Number of washing cycles for each channel	1 – 15
Aspiration time	0.2 – 3 s
Aspiration/dispensing speed	3 Levels
Max. number of channels in a program	2
Choice of 3 washing liquid bottles	Yes
Soaking time	0 – 300 s (increment 10 s)
Shaking time	0 – 150 s (increment 10 s)
Number of washed rows	1 – 12
Time of plate single wash (350 µl), not more	45 s
Number of programs	101
Plate platform and washing head movement	automated
Indication of operation modes	8-line LCD
Overall dimensions (W × D × H)	375 x 345 x 180 mm
Weight	9.6 kg
Input current/power consumption	DC 12 V, 1,8 A / 22 W
External power supply	Input AC 100–240 V; 50/60 Hz; Output DC 12 V
4 CHW Logger	optional
IVD certified	on demand

Option

4 CHW Logger

4-channel washing solution weight logger, 4 CHW Logger provides automatic control of rinsing solution and waste volumes. The washer shows remaining volume for each bottle as percentage and gives a warning message in case of low solution volume or full waste bottle when 4 CHW Logger is connected.



Max. loading per scale cup	2 kg
Overall dimensions (W×D×H)	267 × 252 × 97 mm
Weight	3 kg