

Micro Plate Washer - Inteliwasher 3D-IW8

Description

Inteliwasher 3D-IW8 series microplate washer is designed for washing various types of standard 96-well microtitre plates, microstrips as well as microarrays on FastFRAME (rectangular well shape).

It is suitable for washing wells with different bottom shapes: flat, U-shape and V-shape. The unit is fully programmable ensuring multi-step solution ripening, aspiration (aspiration, combination of aspiration/liquid dispensing and soaking, as well as soaking cycle during a particular period of time). Dispense system of liquid dosage for each channel separately.

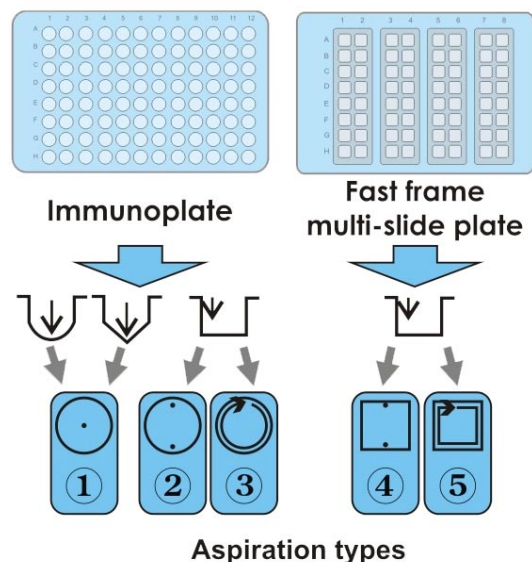


Inteliwasher 3D-IW8 with 4 CHW Logger

50 Programs

The unit has 50 programs divided into 5 following aspiration categories (see figure right):

- **Type 1** (1.0–1.9) IPF96 U/V is intended for round and V-shape immunoplates, 1 point aspiration.
- **Type 2** (2.0–2.9) IPF96 FLAT-2 is intended for flat-bottom shape immunoplates, 2 point aspiration.
- **Type 3** (3.0–3.9) IPF96 FLAT-C is intended for rectangular shape immunoplates, full-circle aspiration direction.
- **Type 4** (4.0–4.9) FastFRAME-2 is intended for multi-slide plate* with rectangular wells.
- **Type 5** (5.0–5.9) FastFRAME-C is intended for multi-slide* plate with rectangular wells.



The unit is designed for use in closed laboratory rooms at temperatures from +10°C to +35°C and relative humidity up to 80% at +25°C decreasing linearly to 50% relative humidity at 35°C.

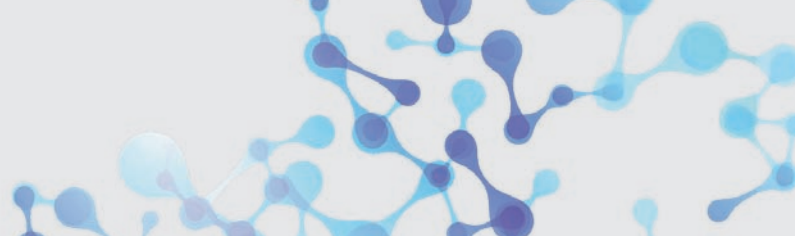
4 CHW Logger (optional)

4-channel washing solution weight logger, 4 CHW Logger provides automatic control of rinsing solution and waste volumes. The washer shows remaining volume for each bottle as percentage and gives a warning message in case of low solution volume or full waste bottle when 4 CHW Logger is connected.

*The FastFRAME (GVS Life Sciences) multi-slide plate or analog plate of another manufacturer, that is compatible with standard 25 x 76 mm (1 x 3 inch) glass slides.

The Unit Provides

- Washing mode
- Rinsing mode
- Mixing mode
- Single point, two point, circular (circle or rectangular path) aspiration
- Possibility of additional solution mixing during time gap between two work cycles
- Possibility to use microtest plates by different manufacturers, ensured by automated plate set up (adjusting to different depths of plate wells)
- Round-bottom plate and strip washing mode
- Possibility of user-defined programs with adjustable parameters



Micro Plate Washer - Inteliwasher 3D-IW8

Technical Data

Output quantity	25 µl - 1600 µl
Individual distribution	25 µl
Output accuracy	±2.5%
Allowed residual liquid volume in plate well	not more than 2 µl
Number of wells that are washed at the same time	8
Number of washing cycles	1 – 15
Aspiration time	1 – 3 s
Final aspiration time	1 – 3 s
Aspiration/output speed	3 levels
Max. number of channels in a program	2
Choice of 3 washing liquid bottles	yes
Soaking time	0 – 300 s (increment 10 s)
Shaking time	0 – 150 s (increment 5 s)
Number of washed rows	1 – 12
Time of one plate wash (300 µl), not more	45 s
Number of programs	50
Plate platform and washing head movement	automated
Indication of operation modes	LCD, 8-line
Overall dimensions (WxDxH)	375 x 345 x 180 mm
Weight	9.9 kg
Input current/power consumption	12 V DC, 1.8 A / 22 W
External power supply	Input AC 100–240 V; 50/60 Hz; Output DC 12 V
4 CHW Logger (optional, not included in delivery)	
Max. loading per scale cup	2 kg
Overall dimensions (WxDxH)	267 x 252 x 97 mm
Weight	3 kg

4 CHW Logger

Optional Accessory for Inteliwasher 3D-IW8.

