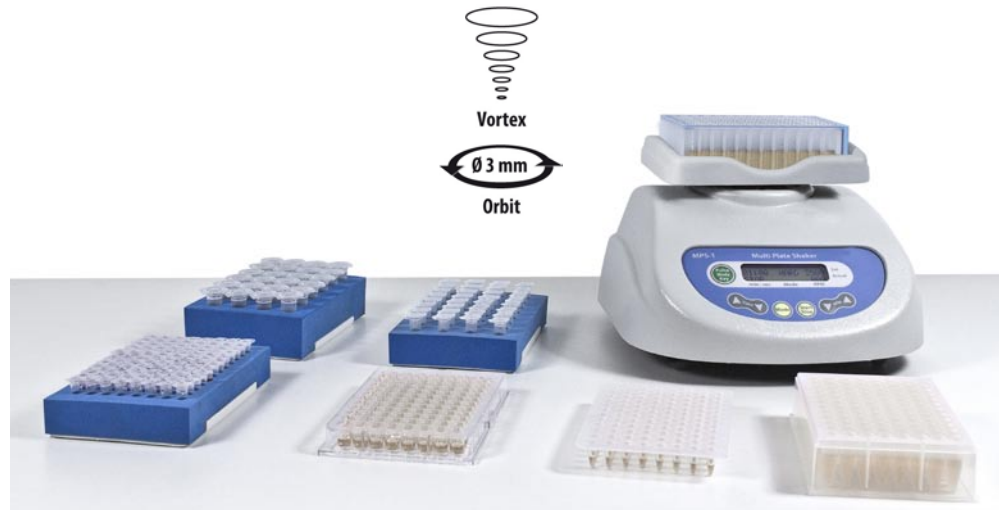


# MPS-1 High-speed Multi Plate Shaker Shaker for Various Applications

## Description

High-Speed Multi Plate Shaker **MPS-1** can be used in virtually any application by providing adjustable mixing of reagents in microtest plates, PCR plates, deepwell plates and test tubes (shaking tubes 0.2 to 2 ml and vortexing any volume up to 50 ml).



The shaker is compact and user-friendly. The shaker is ideal for personal use.

MPS-1 features a head for vortexing a single tube.

Shaker can be used in cold rooms or incubators, operating at ambient temperature range +4°C to +40°C. Low voltage external power supply (12 V) provides electrical safety in humid environment.

### Special Feature Pulse Mode

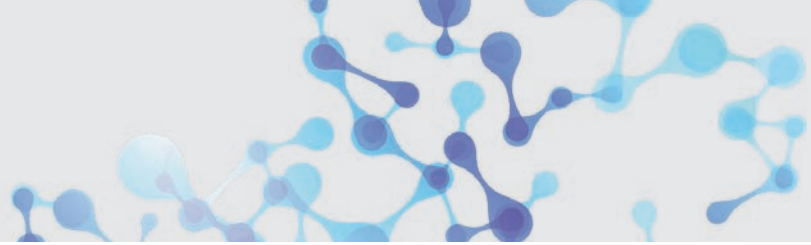
MPS-1 features Pulse Mode mixing function that works on the principle of giving a periodic impulse: the tube is accelerated to the set speed, holds it for 3 seconds and then drops the speed to zero. This motion is repeated until the timer runs out. This method provides a constant state of resuspension of the particles inside a tube, as the acceleration is always changing. The advantage of this method is the high throughput of mixed samples compared to vortexing a single tube.

## Features

- Speed control range 300–3,200 rpm
- Smooth mixing with 3 mm orbit
- Mixing presets
- Pulse Mode mixing function
- Quiet operation — low noise at maximum speed
- High stability — stationary at maximum speed
- Universal platform holder for Deepwell plates and Microtest plates
- Additional platforms for semi- and unskirted PCR plates as well as for tubes from 0.2 to 2 ml
- Can be used in cold rooms or incubators (temperature range +4°C to +40°C)

## Specifications

Mixing speed control range	300–3,200 rpm (100 rpm increment)
Types of mixing presets:	
VORTEX	3200 rpm
HARD	2600 rpm
MEDIUM	1800 rpm
SOFT	1000 rpm
CUSTOM	adjustable rpm
Features a Pulse Mode mixing function	yes
Features a Vortex function	yes
Maximum load	0.3 kg
Orbit	3 mm
Acceleration time to maximum speed	5 s
Digital time setting	0–60 min (15 s increment) / non-stop
Maximum continuous operation time	8 h
Noise level, not more	65 dB
Weight	5.1 kg
Input current/ power consumption	12 V, 800 mA / 10 W
External power supply	Input AC 240 V 50/60 Hz, Output DC 12 V
Platform options	see page 2
Part number	105.1220



## MPS-1 Multi Plate Shaker - Applications

### P-2/24

For 24 x 1.5-2 ml tubes



### Universal platform

Deepwell plate 96/1000 µl



### P-05/32

For 32 x 0.5 ml tubes



### Universal platform

Deepwell plate 96/500 µl



### P-02/96

For 96 x 0.2 ml tubes or  
semi-/ unskirted PCR plate



### Universal platform

Microtest plate 200 µl



### Vortex

For 50 ml tubes



### P-02/05

For 24 x 0.5 ml and  
48 x 0.2 ml tubes



### Vortex

For 15 ml tubes

