

# Multi Bio 3D Shaker

## Description

Multi Bio 3D enables different types of movement in a single module. This option considerably expands the range of applications and increases the efficiency of test sample preparation. The non-slip heat resistant silicone mat on the shaker platform provides stable vessel support during the shaking process.

Can be operated in cold rooms or incubators at a room temperature of +4°C to +40°C.

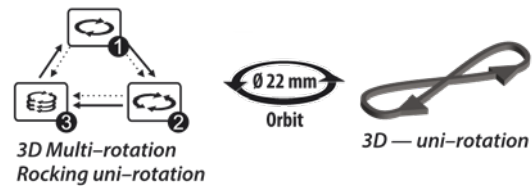
### Various shaking movements (see figure)

- Orbital 3D rotation of the platform ①
- Reciprocal 3D rotation (ping-pong type) ②
- Soft vibrating rocking ③

These three motion types can be performed separately, pairwise and in cycles, periodically repeating the sequence of three motion types.



Multi Bio 3D Shaker



## Applications

- Hybridization reactions
- Cell growing
- Gel washing
- Soft extraction and homogenisation of biological components in solutions.

## Optional Accessories

Suitable for standard platform

### PDM mat with naps

Prevents tubes of different sizes from rolling off the platform.

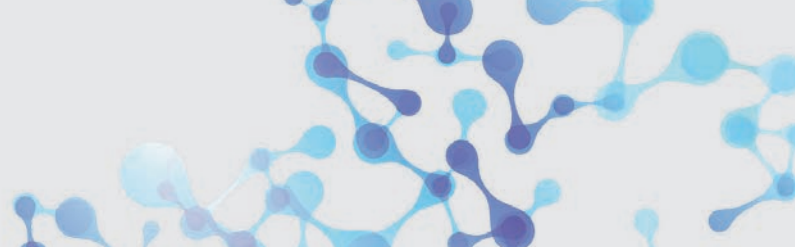
Order No.: 105.1202



Multi Bio 3D with PDM mat (option)



PDM mat with(option)



## Multi Bio 3D Shaker



### Technical Data

Order Number Multi Bio 3D with non-slip mat	105.1200
Order Number optional PDM nap mat	105.1202
Speed setting range Orbital ❶ and reciprocal ❷ motion	1 – 100 rpm
Timer sound signal	Yes
Angle of rotation with reciprocal motion ❷	0° – 360° increment 30°
Rocking angle Vibration rocking ❸	0° – 5°, increment 1°
Fixed platform tilt angle	7°
Orbit	22 mm
Platform working area	215 x 215 mm
Max. load	1 kg
Maximum operating time without interruption	24 h
Time setting range for orbital ❶ and reciprocal ❷ shaking motion	0 – 250 s
Time setting range for soft, vibrating rocking ❸	0 – 5 s
Number of cycles	0 – 125
Total dimensions (W x D x H)	235 x 235 x 140 mm with platform
Weight	1.8 kg
Input current/power consumption	12V, 380 mA / 4.6 W
External power supply	Input AC 100 – 240 V; 50/60 Hz, Output DC 12 V