

Compact Shaker SM30 A/B/C

Description

Robust, durable table shakers with orbital, horizontal or combined shaking motion (three model types). For all areas of application that require high stress on the units in continuous operation.

SM30 offers a loading capacity of up to 30 kg on a shaking surface of 560 x 400 mm. A wide range of attachments provides an optimal hold for many applications.

Attention:

Basic unit **without** swing plate, without attachment. various attachments and accessories see page 3.



Compact shaker SM30 A

Models

Model SM30 A / control:

Orbital movement, analog or control (with digital display and programmable)

Model SM30 B / control:

Horizontal movement (reciprocating), analog or control (with digital display and programmable)

Model SM30 C / control:

Combination unit: orbital or horizontal movement selectable, analog or control (with digital display and programmable)



Compact shaker SM30 A control

Specifications

- Flexible attachment system. With the clamping bars, standing vessels of any shape can be fixed (beakers, Erlenmeyer flasks, test tube racks, etc.). Flat dishes can be placed directly on the rubber mat (without clamping bars). Additional bars can also be used to vigorously mix horizontal graduated cylinders or separating funnels.
- Speed/running consistency even with different loads.
- Reliability even in continuous operation.



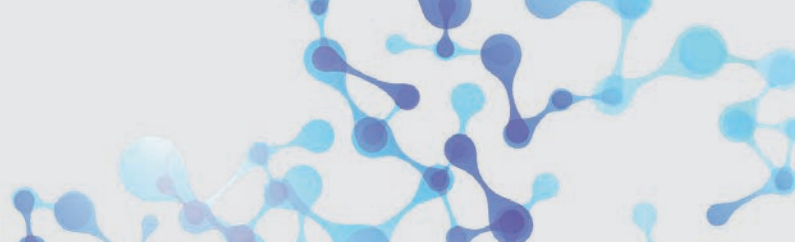
Suitable for incubator hood TH30

Compact Shaker SM30 A/B/C



Technical Data

Models	SM30 A, SM30 B, SM30 C (analog/digital)
Shaking motion	orbital SM30 A horizontal (reciprocating) SM30 B can be switched from orbital to horizontal SM30 C
Shaking speed	15 – 300 U/min, steplessly adjustable
Shaking stroke	26 mm
Shaking platform (W x D)	560 x 400 mm
Max. load	30 kg
Timer	0 – 120 min or continuous resp. 0 – 30 h or continuous for model "conrol"
Electrical supply	230 V, 60 Hz
Dimensions (W x D x H)	680 x 610 x 160 mm
Weight	33 kg
Enclosure protection	IP 21
Heat emission	ca. 7 W
Ambient temperature	5°C to 50°C
Relative humidity	~85%



Accessories and Racks Compact Shaker SM30



Rack System Combifix SMA
Basic rack with five clamping strips h. For fastening different upright vessels. With additional strips also suitable for other vessels.



Rack System Combifix SMB
Basic rack with four clamping strips h and four clamping strips v. For fastening horizontal vessels between the clamping strips, or as added support for high vessels.



Rack System Combifix SMC
Rack system with two clamping strips h, two cramp strips and one spring strip.



Cramp strip
Cramp strip with 5 clamps NS 19 (D20) and 2 clamps NS 29 (D32). For fastening horizontal separating funnels



Spring strip
For securing the stoppers of separating funnels or other horizontal vessels.



Inkubationshaube TH30
The Incubator Hood TH30 has a temperature range from +5°C above ambient to +50°C and can be combined with all universal shakers SM30 or used as independent unit.

Height sufficient for 2000 ml Erlenmeyer flasks.



Universal Tray SM
Coated tray with drillings for individual fastening of spring clamps or test tube racks.

Shaking platform:
560 x 400 mm

Loading capacity Universal Tray SM

ml	10	25	50	100	250	500	1000	2000	3000	5000
max.	117	64	63	49	23	15	11	6	4	2



Universal Spring Clamps
Stainless steel clamps for mounting on the universal trays. Sizes matched to Erlenmeyer flasks. Different sizes for 10 ml - 5000 ml. Can also be used for round-bottomed flasks, beakers, etc.



Test tube rack
For mounting with clamping bars on the top racks or with the hinged foot on the universal trays. With the hinged foot it is possible to vary the angle of inclination of the test tubes.

Dimensions: 289 x 100 mm

Please note:

To mount test tube racks on a universal tray, you need a rack and a swivel foot.

Drill Holes	68	44	44	14
Ø in mm	14 mm	16 mm	18 mm	30 mm



2-storey Top Frame SM
Top frame with 2 coated trays with drillings for spring clamps or test tube racks.

Total height: 332 mm
Distance between the two storeys: 300 mm (height sufficient for 1000 ml Erlenmeyer flasks)