

## Orbitalshaker

# Compact Shaker KS15 A/B

### Description

Reliable, robust shaker for daily use. For all applications demanding high stress and continuous operation. KS15 provides a high loading capacity of 15 kg on a shaking platform of 400 x 300 mm.

### Caution:

Basic equipment without rack system.  
You will find further loading possibilities on page 3.

### Models

#### Model KS 15 A / control:

Orbital motion  
analog or control (digital, programmable)

#### Model KS 15 B / control:

Reciprocating (horizontal) motion  
analog or control (digital, programmable)

### Advantages

- Flexible Platform. The clamping bars can be used to fix standing vessels of any shape (beakers, Erlenmeyer flasks, test tube racks, etc.) Flat bowls can be placed directly on the rubber mat (for this purpose the clamping bars are removed) and additional bars can be used to mix even horizontal measuring cylinders or separating funnels.
- Constant RPM even with various loadings
- Reliable even in continuous operation



Compact shaker KS 15 A control



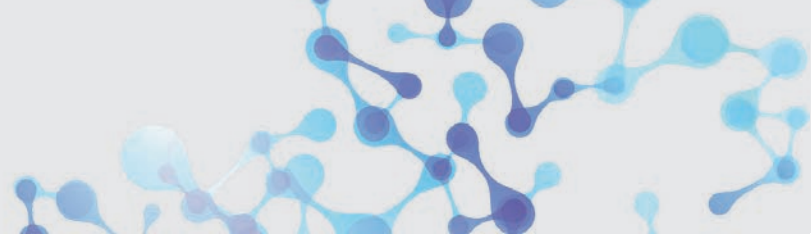
Compact shaker KS 15 A

## Compact Shaker KS15 A/B



### Specifications

Model	KS 15 A (analog)/ KS 15 A control (digital)	KS 15 B (analog) KS 15 B control (digital)
Motion	orbital	reciprocating (horizontal)
Shaking speed	30 – 420 rpm, steplessly adjustable	30 – 420 rpm, steplessly adjustable
Stroke:	17 mm	17 mm
Shaking platform (W x D)	400 x 300 mm	400 x 300 mm
Max. load	15 kg	15 kg
Timer / Runtime	0 – 120 min / continuous programmable (control)	0 – 120 min / continuous programmable (control)
Power Supply	230 V, 60 Hz, 29 VA	230 V, 60 Hz, 29 VA
Dimensions (W x D x H)	510 x 490 x 150 mm	510 x 490 x 150 mm
Weight	18 kg	18 kg
Ambient temperature	5°C up to 50°C	5°C up to 50°C
Relative humidity	~ 85%	~ 85%
Heat output	approx. 5 W	approx. 5 W
Protection class	IP 21	IP 21
Part Number:	105.0800 (analog) / 105.0802 (digital)	105.0801 analog / 105.0803 (digital)



## Accessories and Attachments Compact Shaker KS15 A/B



### Rack system Combifix KS

With 3 clamping strips h and rubber mat. Shaking platform 400 x 275 mm. For fastening upright vessels. With additional strips also suitable for other vessels.



### Universal tray KS

Coated tray with drillings for individual fastening of spring clamps, test tube racks, or holders for 1 microplate. Shaking platform 430 x 300 mm.



### Clamping strip h

Holder with sponge rubber cover for fastening upright vessels.



### Spring clamps

For universal trays (stainless steel). The sizes are related to Erlenmeyer flasks, but are also suitable for round-bottom flasks, beakers, etc. From 10 ml up to 5000 ml.



### Clamping strip v

Holder with sponge rubber cover in combination with clamping strip h. For fastening horizontal or high vessels.

ml	10	25	50	100	250	500	1000	2000	3000	5000
max.	68	34	27	24	15	9	5	2	1	1



### Cramp strip

Cramp strip with 4 clamps NS 19 (D20) and 1 clamp NS 29 (D32). For fastening horizontal separating funnels.



### Test tube rack

To be fastened either with clamping strips on rack systems or with a hinged foot on universal trays. With the hinged foot it is possible to vary the angle of inclination of the test tubes. Dimensions: 289 x 100 mm.



### Spring strip

For securing the stoppers of separating funnels or other horizontal vessels.

### Please note:

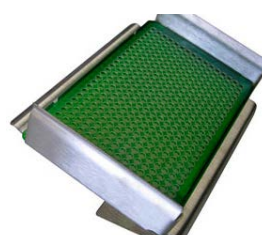
For fastening test tube racks on a universal tray test tube rack and hinged foot are necessary.

Drillings	68	44	44	14
Ø in mm	14 mm	16 mm	18 mm	30 mm



### Inkubationshaube TH 15

Can be combined with all compact shakers or used as independent unit. Constant temperatures; also for high vessels (e.g. 1000 ml Erlenmeyer flasks). Coated metal housing with 3 windows, the front door opens upwards.



### System for 1 MT-Plate

for fixing on universal tray. Tilted approx. 20°.