

# Recirculating Chiller DLK 402

## Description

The smallest in its range. The DLK 402 circulating cooler serves as a universal cooler for the entire laboratory. A new method of casing construction provides for modern design, low weight and guarantees innovative technical features. Due to the compact space-saving design with low-noise cooling unit, the freezer unit is suitable for direct use on the desk.

## Characteristics

- Electronic temperature control with LED display
- Float switch for monitoring coolant level
- Level indicator on the front of the appliance
- Limit alarm when the permitted working area is exceeded
- Refrigeration unit: low noise, fully hermetically sealed, air-cooled, low maintenance
- Different hose connections included
- 3/4" filler neck and vent valve on the top of the appliance
- Casing made of rigid polyurethane foam
- Heat exchanger in non-ferrous metal version

## Options

### DLK402DP:

Dual pump with increased flow rate to 5 or 6 l/min.  
Order No.: 104.1506



DLK 402  
Order No: 104.1502

## Accessories

### • Thermo-Insulated Hoses

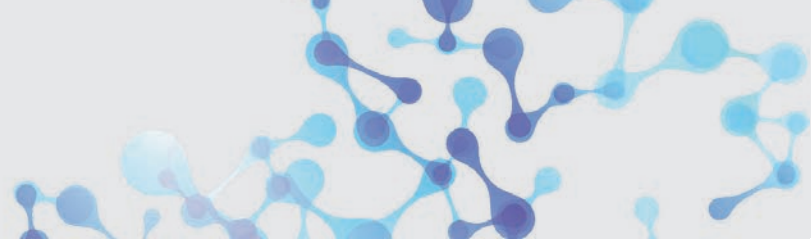
- Silicon Hoses: ID 10,0mm | to 0.5 bar | to -30°C | without fabric
- Length on demand (maximum length: 10 m)

### • Thermal Plate TP

- For cooling and stabilising temperatures in conjunction with FRYKA Recirculating chillers
- Two hose fittings made of stainless steel
- Stainless steel plates
- Processing of refrigerated products during cooling possible
- Low height:
  - ergonomic work
  - can be placed on table
  - for installation
- Separate installation of refrigeration unit and thermal plate possible
- Plate size as desired

### • HKF Coolant 15.1 MW65

- Recommended for all FRYKA circulating coolers
- 5 litre container
- Ready-made mixture
- Frost-proof up to -15°C



## Recirculating Chiller DLK 402



### Technical Data

Model	DLK 402	DLK 402 DP
Operation	-10°C bis +40°C	-10°C bis +40°C
Control accuracy	+/- 1 K	+/- 1 K
<b>Cooling capacity in watt</b>		
at +30 °C	380	380
at +10 °C	270	270
<b>Circulation pump</b>		
Flow rate	4 l/min	5 l/min (8 mm tube) 6 l/min (10 mm tube)
Flow pressure	0.15 bar	0.3 bar
External dimensions [WxDxH]	260 x 370 x 405 mm	
Weight	18 kg	
Ambient temperature	+12°C to +30°C	+12°C to +30°C
Electrical connection	230 V / 50 Hz	
Max. current	1.5 A	
Coolant tank	4 litres	
Order No.	104.1502	104.1506