

Gel-Documentation

UV GelSolo



Applications

- Fluorescent DNA gels
- Fluorescent protein gels
- Colorimetric protein gels



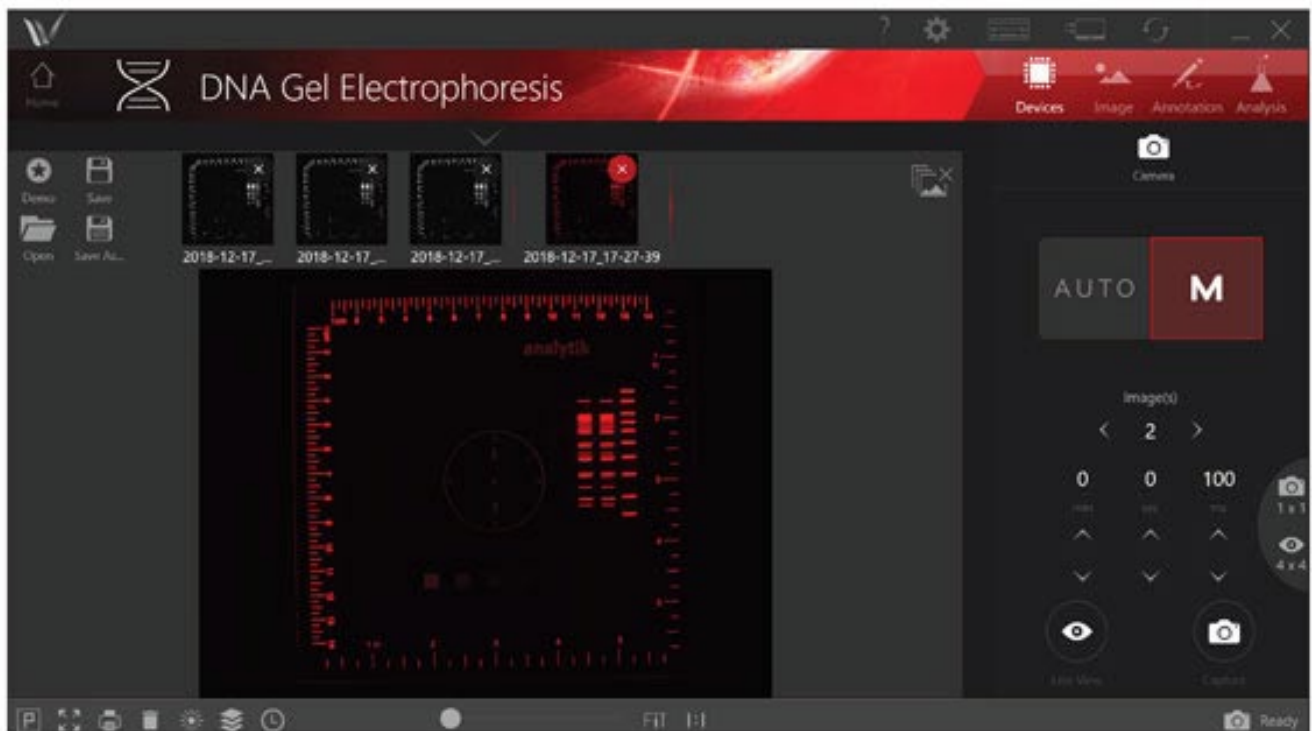
All-in-one design for steamlined gel documentation

Benefits

- High resolution 5.0 MP camera
- Lens is easily accessible for adjustment of aperture, zoom and focus
- Three-position filter tray with Ethidium Bromide filter; additional filters are available
- Epi-white and epi-blue LED lights enable a variety of gel imaging applications
- Large 11.6" touch screen with user-friendly software optimizes image capture and analysis
- Easy access data storage for saving images on the USB drive, to the system or network computer
- Unique viewing window allows UV-safe viewing of gels without opening the door
- Wide front door; safety switch turns the UV light off when the door is open
- Side access doors for gel repositioning and cutting while viewing the gel on the screen
- Choice of UV Transilluminator - single, dual or triple wavelength UV Transilluminator models, and blue light models

Integrated Capture Software with Touch Screen Simplicity

The system is controlled by a touch screen with intuitive image acquisition software.



Overview

- Equipped with VisionWorks software as standard.
- Clear user interface.
- Exposure time can be adjusted user-defined
- Saving images as TIFF or JPEG.
- Image enhancement and analysis features
- Personalization possible.
- Extensive functions and annotation tools for publication purposes.
- Tools: Noise reduction, histogram adjustment, inversion, pseudocolor, and more.
- Extensive analysis functions for accurate and reproducible results.
- Several user-defined tools such as automatic lane and band detection, 1D analysis, area density, and colony counting.
- All data can be conveniently exported to Excel
- Quickly switch to an enhanced version of the user interface that offers additional features such as Stacks and Series capture modes, image enhancement tools such as background subtraction and compositing, and more.

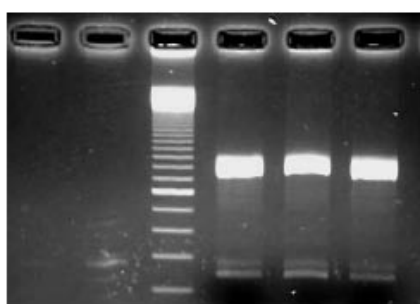


Technical Data

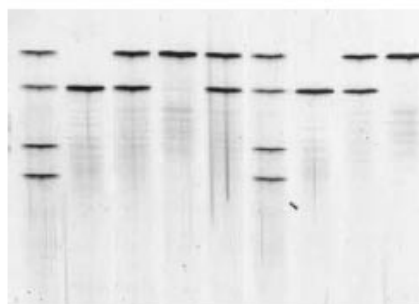
Specifications/features	UV-SoloTouch
Camera/Lens	GelCam 315, 5.0 MP, with 8-48 mm, f/1.2 manual zoom lens
Darkroom features	<ul style="list-style-type: none"> • 11.6" large articulating touch screen • Wide front door with UV safety switch • Gel viewer window • Epi white and epi blue LEDs • Side access doors • USB ports • 3 position emission filter tray
Accessories included	Ethidium bromide filter Choice of transilluminator: Filter sizes: 20 x 20 cm, 21 x 26 cm or 25 x 26 cm; Wavelength: 1 UV 302 nm, 2 UV 302/365 nm or 3 UV 254/302/365 nm, 230V, 50 Hz or blue light transilluminator
Dimension: H x W x D	80,5 x 39,4 x 38,4 cm

Applications

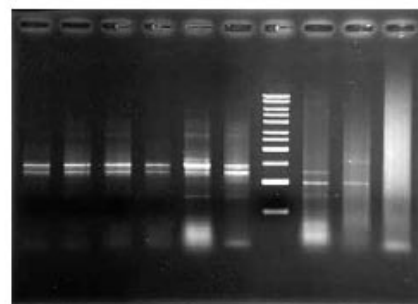
- Fluorescent DNA gels
- Fluorescent protein gels
- Colorimetric protein gels



Ethidium bromide stained agarose gel (UV light)



Silver stained polyacrylamide gel (white light)



Ethidium bromide stained agarose gel (UV light)