

Biological Safety Cabinets Class II Mars Pro Series 900 – 1800

Description

The Mars Pro safety cabinets are being manufactured & tested in compliance with EN 12469. Mars Pro Class 2 is the safety cabinet of choice when working with **virostatic and cytostatic applications**. 3-filter design for maximum protection when handling hazardous materials such as cytostatic, virustatic pharmaceutical substances. Mars Pro is a series of 3-Filter Class 2 cabinets which incorporates the latest in laminator technology, energy-saving designs and HEPA-filtration, with options that give the best protection for you, your products and your laboratory. Lower energy consumption also results in less heat transmission, both into the work chamber and to the laboratory environment, contributing significantly to reduced overall energy costs. The ergonomically arranged, angled front window and the glare-free lighting allow a comfortable and relaxed working posture - both sitting and standing. The integrated control panel with LCD display is conveniently positioned for ease of viewing and operation, ensuring optimal performance and safety characteristics at all times. Thanks to their low-noise design, Mars safety cabinets are among the quietest safety cabinets available.

Safety Features

- 110 mm HEPA filters with efficiency at 99,999% against 0,3 µm particles, ensuring a clean sterile work chamber environment.
- Unique laminator/diffuser technology giving turbulent-free air flow, protecting your samples against particle contamination.
- Down flow & exhaust fans are constantly monitored via the flow sensors to ensure safe operating conditions are maintained.
- Alarms, both acoustic and visual for unsafe airflow conditions or any interruption.
- Angled pre-filter for easy inspection and filter exchange.
- Sectional 300 mm work tops allowing loads up to 50 kg per 300 mm, easy removal for cleaning and decontamination of all surfaces.
- Easy to maintain as all service functions are performed from the front of the cabinet, including changing of the HEPA filters, pcb's and sensors, and adjustments/monitoring of alarms and fan speed.



Mars Pro 900 (650 x 900 x 700 mm)



Mars Pro 1200 (650 x 1200 x 700 mm)



Mars Pro 1500 (650 x 1500 x 700 mm)



Mars Pro 1800 (650 x 1800 x 700 mm)

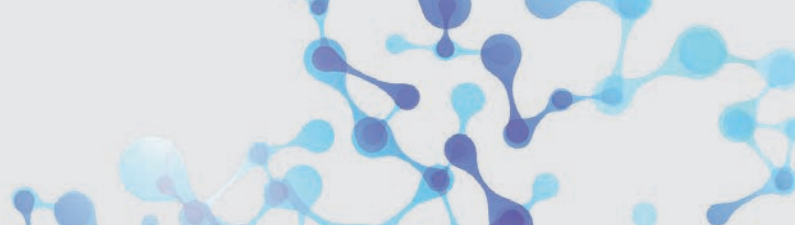
Benefits

- Low operating temperature and heat generation
- Low noise level
- Energy efficiency
- Ergonomic design
- Excellent light distribution
- Electrically adjustable windscreen
- Integrated control panel with LCD display
- Panorama front and side windows
- Easy window cleaning from both sides

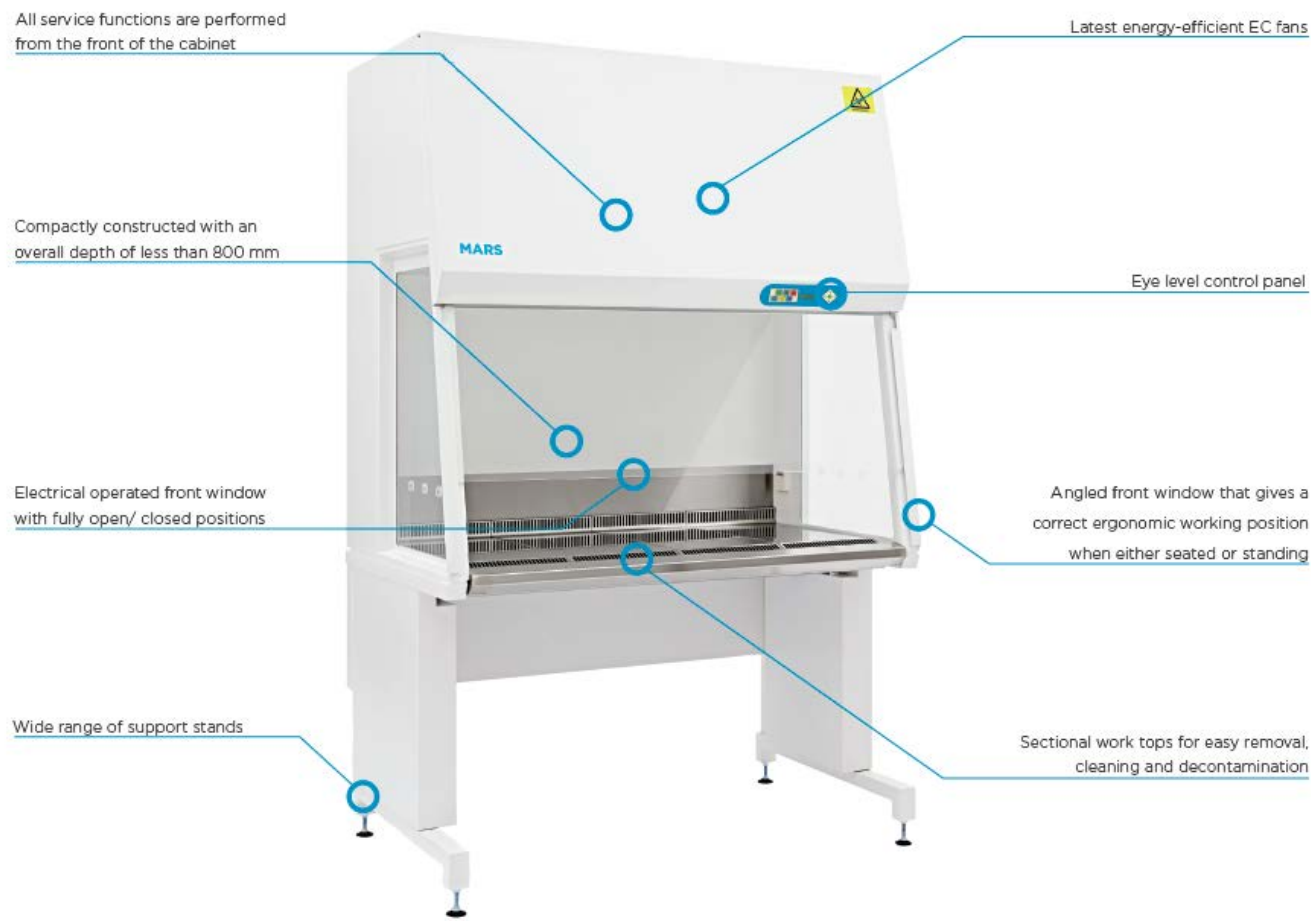
Safety Cabinet (Class II) Mars **Pro** 900 – 1800

Technical Data

| Model | Mars 900 | Mars 1200 | Mars 1500 | Mars 1800 |
|--|--|----------------------------|----------------------------|----------------------------|
| External dimensions (W x D x H) with adjustable stand (Standard) | 1004 x 797 x 2033 mm | 1304 x 797 x 2033 mm | 1609 x 797 x 2033 mm | 1914 x 797 x 2033 mm |
| Dimensions working area (W x D x H) | 900 x 650 x 700 mm | 1200 x 650 x 700 mm | 1500 x 650 x 700 mm | 1800 x 650 x 700 mm |
| Front opening (height) | 200 mm | | | |
| Number of table top segment | 3 | 4 | 5 | 6 |
| Height worktop with adjustable base frame | 750 (745 – 780) mm | | | |
| Sound Pressure Level at factory settings | ≤ 47 dB (A) | ≤ 49 dB (A) | ≤ 51 dB (A) | ≤ 53 dB (A) |
| Sound Pressure Level in Eco-Save mode | ≤ 37 dB (A) | ≤ 38 dB (A) | ≤ 38 dB (A) | ≤ 40 dB (A) |
| Down flow, Air velocity | 0,28 ±0,01 m/s | | | |
| Inflow, Air velocity | 0,45 m/s | | | |
| Exhaust, Air flow rate | 292 m ³ /h | 389 m ³ /h | 486 m ³ /h | 583 m ³ /h |
| Light illuminance (fluorescent tube) | > 1000 Lux | > 2000 Lux | > 2000 Lux | > 2000 Lux |
| Filter construction in accordance with EN 1822-1 | 3-Filter system, HEPA, min. Class H14 | | | |
| Table top and trough material | Stainless steel AISI 304 (Optional AISI 316 stainless steel available) | | | |
| Table top max. total load | 100 kg | | | |
| Side glass material | 5 mm hardened glass with 3 x 22mm ø openings | | | |
| Front glass material | 6 mm laminated safety glass (optional antireflex coating available) | | | |
| Cabinet and back panel material/colour | Polyester-coated steel / RAL 9016 | | | |
| Power supply | 220 – 240 V / 50/60 Hz | | | |
| Socket type, in pairs, right and left | 2-way (total of 4 sockets) | | | |
| Max. current (fuses) | 10 A | | | |
| Sockets: max. total current (fuses) | 6,3 A | | | |
| Shipping weight | approx. 2.2 m ³ | approx. 3.0 m ³ | approx. 3.2 m ³ | approx. 4.1 m ³ |
| Net weight | 296 kg | 308 kg | 320 kg | 332 kg |



Safety Cabinet (Class II) Mars **Pro** 900 – 1800



Optional Accessories

| Models | Mars Pro 900 – 1800 |
|--|---|
| Electr. adjustable base frame - adjustment range | 745 – 1050 mm |
| LED-Licht | Excellent distribution of neutral White light 1500 Lux / 4000 K |
| UV-Tube | For simple and fast decontamination |
| Additional sockets | |
| Check valve, straight or lateral Ø 200 mm | |
| Potential-free contact | 4er-Set |
| Hydrogen peroxide vapour (VHP) decontamination | |